



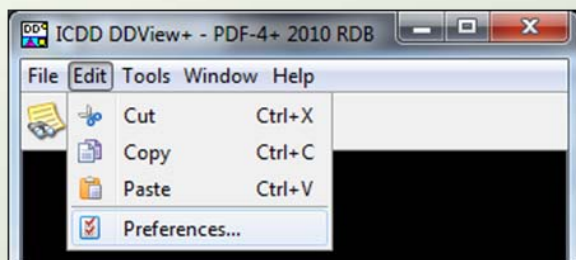
Search Preferences

Search Preferences

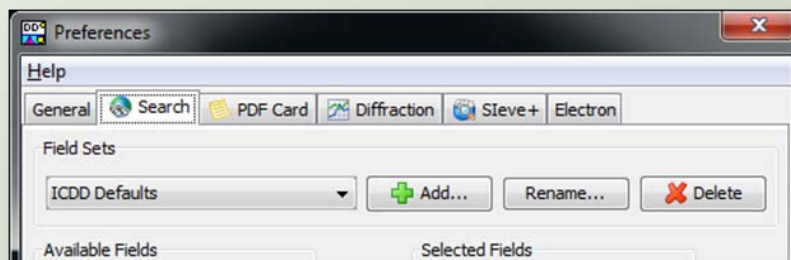
- What?
 - Search Preferences allow the customization of the DDView+ Results table display fields.
- Why?
 - To view the relevant data.
 - To keep the display fields organized.
- How?
 - Use the Search Preferences form.
 - Modify the Results table directly.

Search Preferences Form

- The Search Preferences form can be accessed by one of two ways:
 - Navigate to the DDView+ *Edit* menu and select *Preferences*. Then select the *Search* tab.

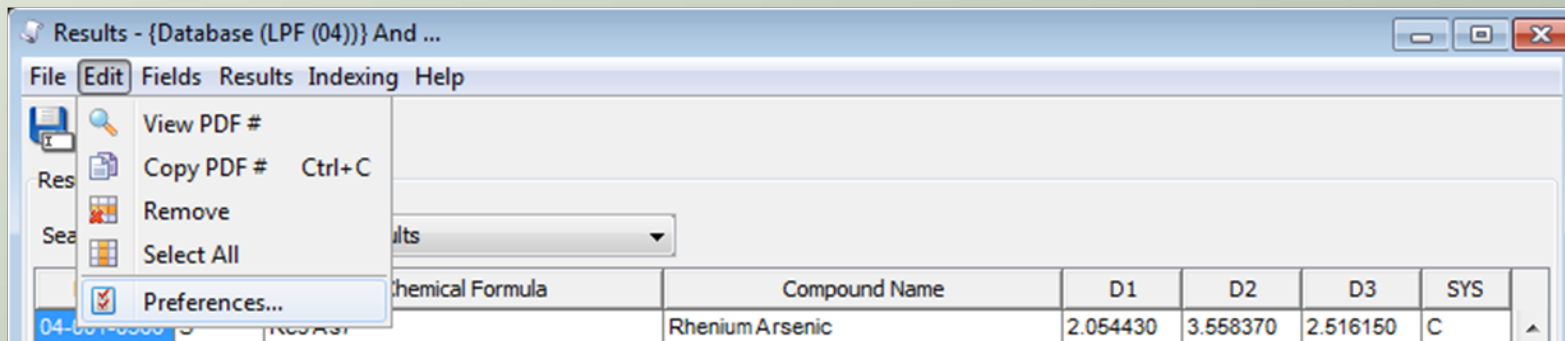


Preferences item in the DDView+ Edit menu



Search tab in the Preferences form

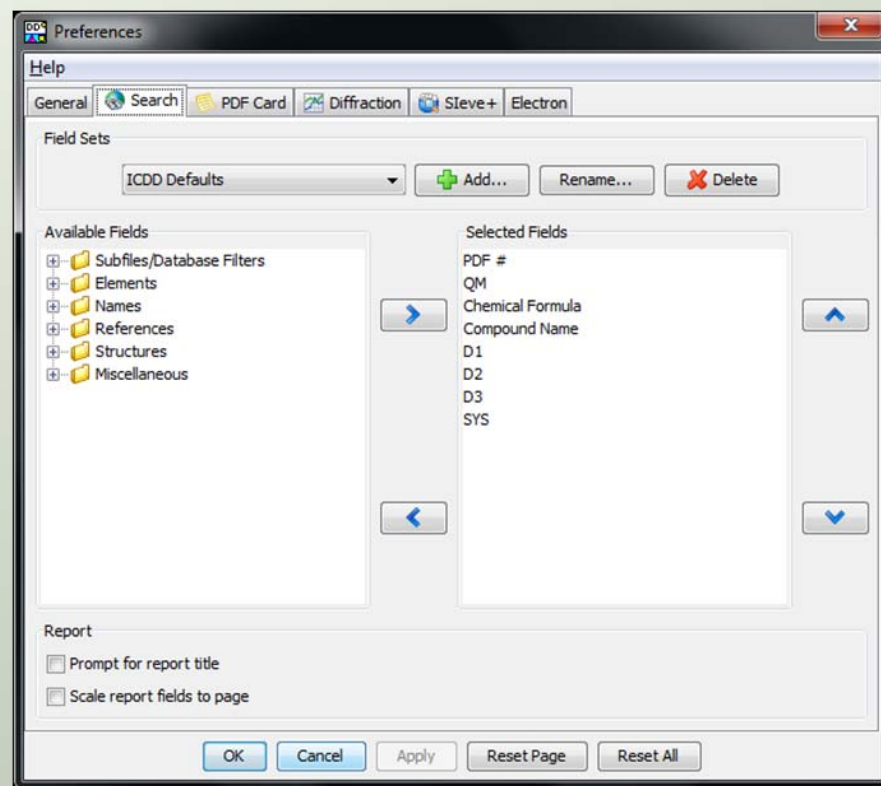
- Or navigate to the Results form *Edit* menu and select *Preferences*.



Preferences item in the Results form Edit Menu

Search Preferences Form

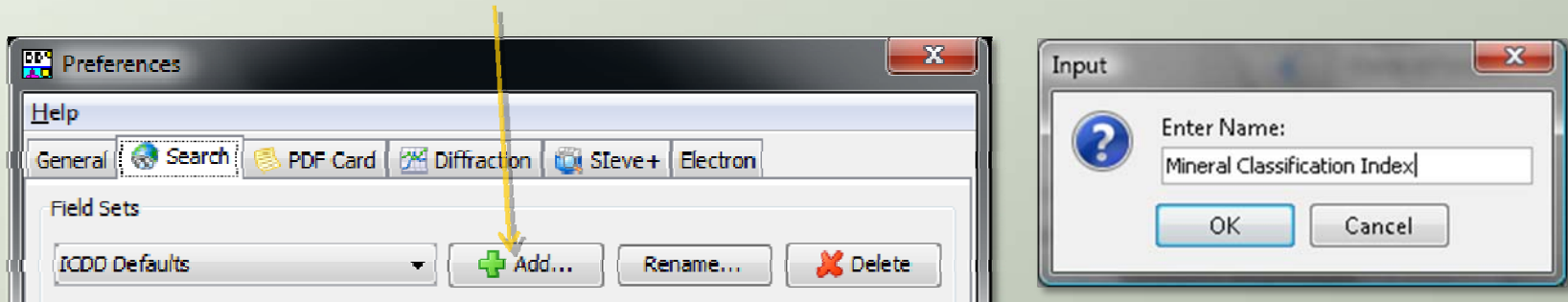
- The Search Preferences form is used to create groups of display fields, or Field Sets.
 - Each Field Set can hold up to 90 display fields.
 - The name of each Field Set can be customized.
 - The ordering of the display fields within, can be customized.
 - Field Sets are automatically saved to the hard drive.



Search Preferences form

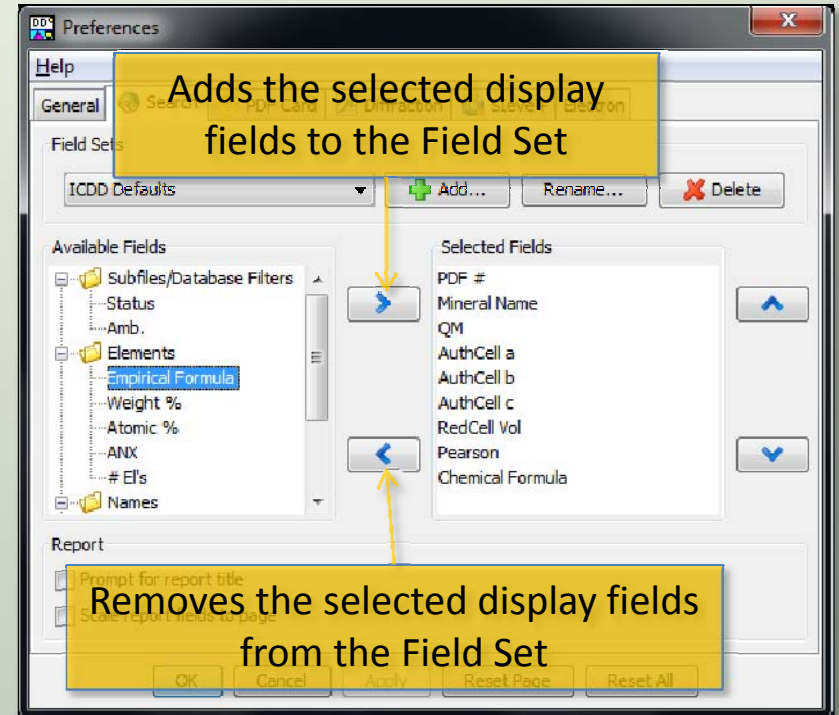
Search Preferences Form

- To create a Field Set in the Search Preferences form:
 1. Click the *Add* button
 2. Enter the Field Set name



Search Preferences Form

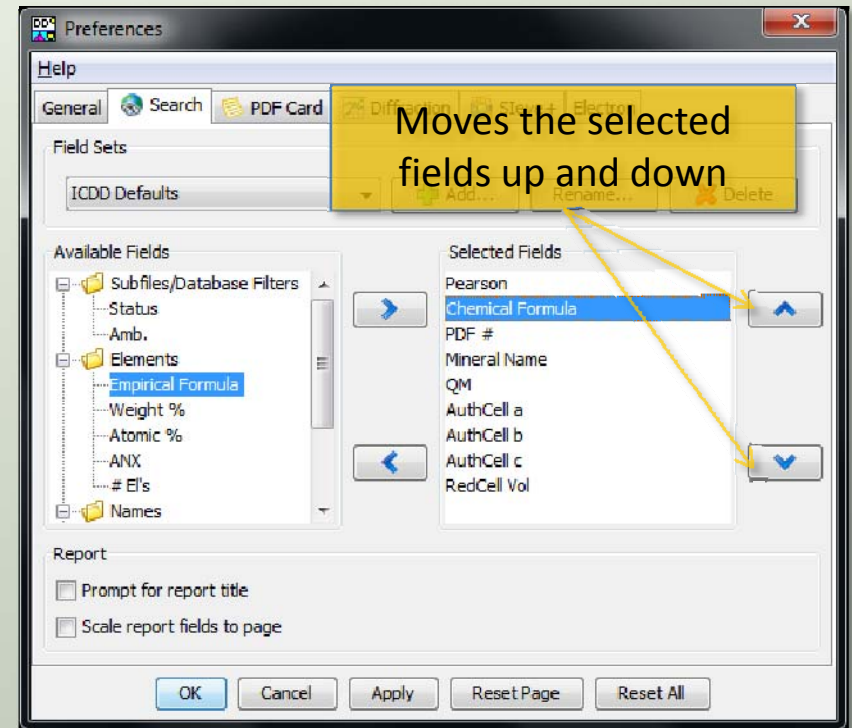
3. Move the desired display fields from the *Available Fields* list to the *Selected Fields* list. This can be done in one of two ways:
- Double-click the desired display field in the *Available Fields* list.
 - Or, select the desired display fields in the *Available Fields* list, then click the *right-arrow* button.



Search Preferences form with newly created Field Set

Search Preferences Form

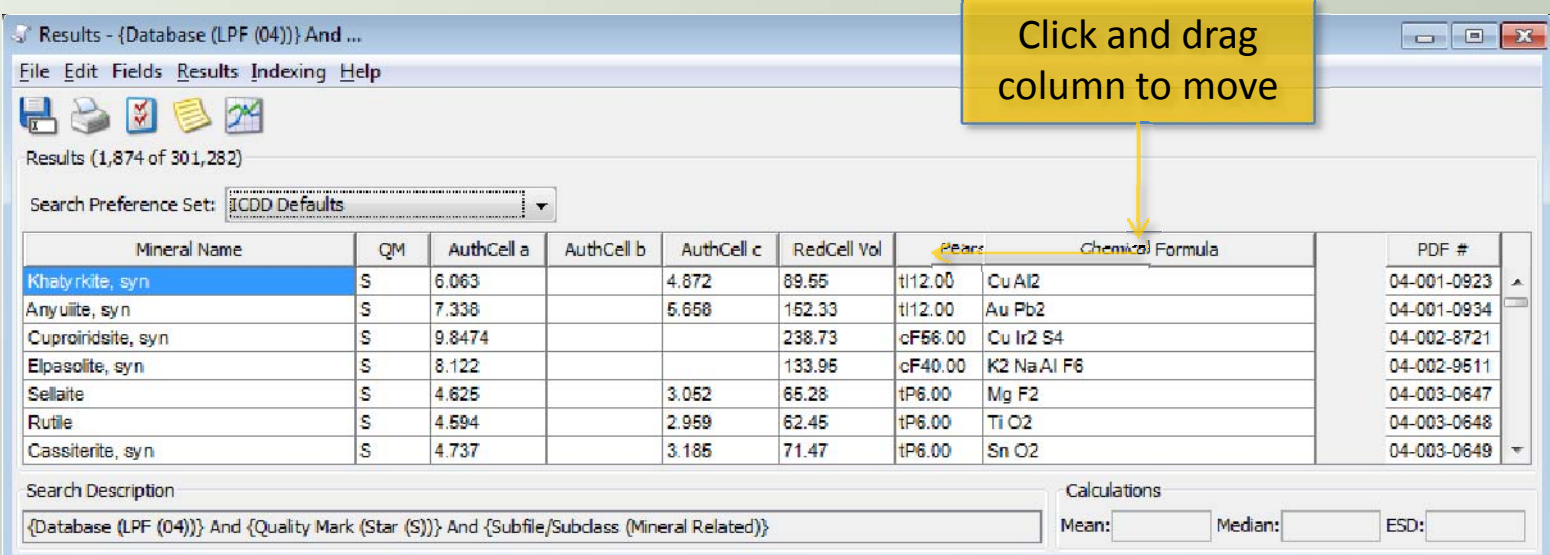
4. Customize the display field ordering by clicking on the *up* and *down* arrow buttons. The top-to-bottom ordering corresponds to a left-to-right ordering on the Results table.
5. Click the OK button to add the Field Set to the Results table.



Search Preferences form with modified display field ordering

Modifying the Results Table

- Once the Search Preferences have been applied to the Results table, it is possible to directly fine-tune the current Field Set.
- To move a display field, click it with the mouse and drag it to the desired position.



Results - {Database (LPF (04))} And ...

File Edit Fields Results Indexing Help

Results (1,874 of 301,282)

Search Preference Set: ICDD Defaults

Mineral Name	QM	AuthCell a	AuthCell b	AuthCell c	RedCell Vol	Pearce	Chemical Formula	PDF #
Khatyrkite, syn	S	6.063		4.872	89.55	tI12.00	Cu Al2	04-001-0923
Anyulite, syn	S	7.338		5.658	152.33	tI12.00	Au Pb2	04-001-0934
Cuproiridsite, syn	S	9.8474			238.73	cF56.00	Cu Ir2 S4	04-002-8721
Elpasolite, syn	S	8.122			133.95	cF40.00	K2 Na Al F6	04-002-9511
Sellaite	S	4.625		3.052	65.28	tP6.00	Mg F2	04-003-0647
Rutile	S	4.594		2.959	62.45	tP6.00	Ti O2	04-003-0648
Cassiterite, syn	S	4.737		3.185	71.47	tP6.00	Sn O2	04-003-0649

Search Description: {Database (LPF (04))} And {Quality Mark (Star (S))} And {Subfile/Subclass (Mineral Related)}

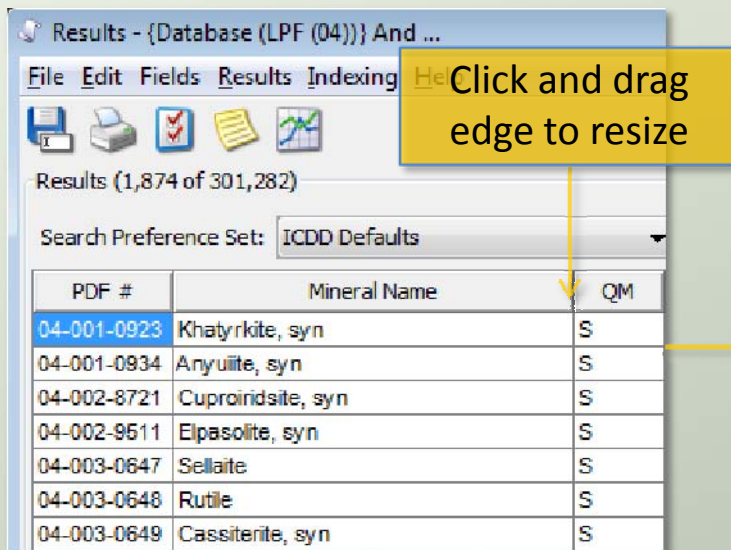
Calculations: Mean: Median: ESD:

Click and drag column to move

Moving the Chemical Formula display field using the mouse

Modifying the Results Table

- To resize a display field, click the right edge with the mouse and drag it to the desired width.



Results - {Database (LPF (04))} And ...

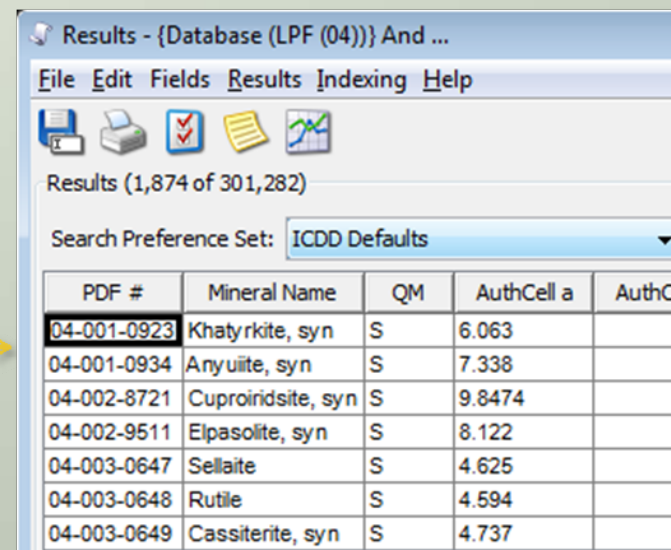
File Edit Fields Results Indexing Help

Results (1,874 of 301,282)

Search Preference Set: ICDD Defaults

PDF #	Mineral Name	QM
04-001-0923	Khatyrkite, syn	S
04-001-0934	Anyuinite, syn	S
04-002-8721	Cuproirdsite, syn	S
04-002-9511	Elpasolite, syn	S
04-003-0647	Sellaite	S
04-003-0648	Rutile	S
04-003-0649	Cassiterite, syn	S

Mineral Name display field with default width



Results - {Database (LPF (04))} And ...

File Edit Fields Results Indexing Help

Results (1,874 of 301,282)

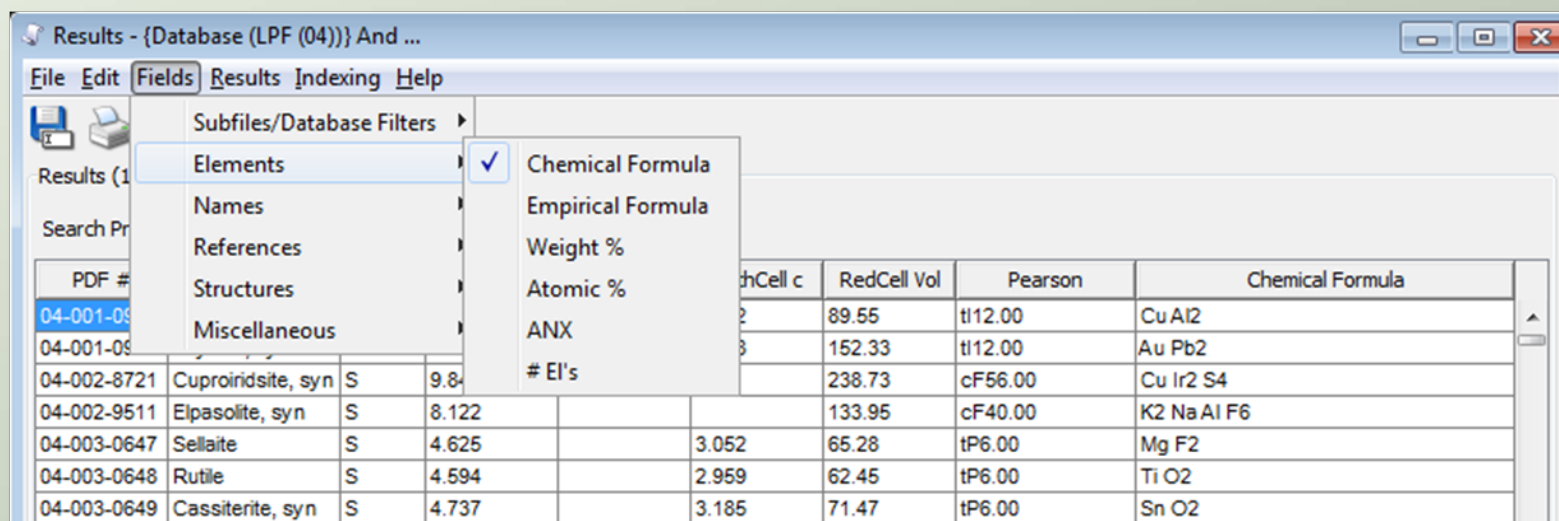
Search Preference Set: ICDD Defaults

PDF #	Mineral Name	QM	AuthCell a	AuthC
04-001-0923	Khatyrkite, syn	S	6.063	
04-001-0934	Anyuinite, syn	S	7.338	
04-002-8721	Cuproirdsite, syn	S	9.8474	
04-002-9511	Elpasolite, syn	S	8.122	
04-003-0647	Sellaite	S	4.625	
04-003-0648	Rutile	S	4.594	
04-003-0649	Cassiterite, syn	S	4.737	

Mineral Name display field resized to a smaller width

Modifying the Results Table

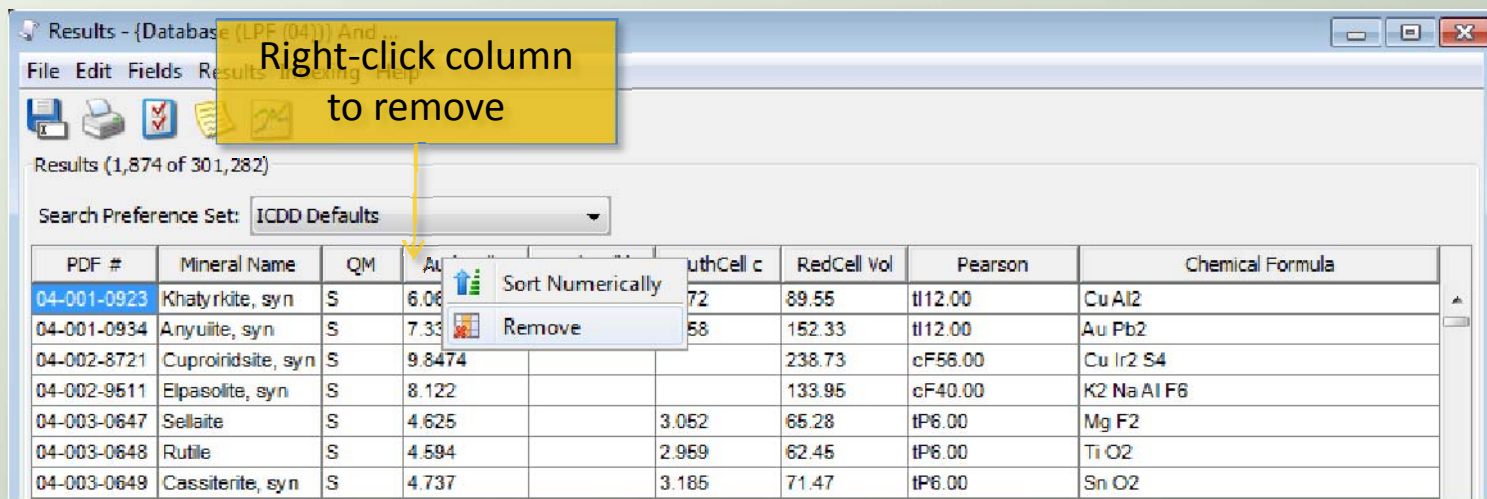
- To add a display field to the Results table (and current Field Set), navigate to the *Fields* menu and select the appropriate display field.
 - Currently selected display fields are checked.
 - Unselected display fields are not checked.



Fields menu

Modifying the Results Table

- To remove a display field from the Results table (and current Field Set), right-click the column and select *Remove*.



Results - {Database (LPF (041)) And ...}

File Edit Fields Results Results Modeling Help

Results (1,874 of 301,282)

Search Preference Set: ICDD Defaults

PDF #	Mineral Name	QM	Au	AuthCell c	RedCell Vol	Pearson	Chemical Formula
04-001-0923	Khatyrkite, syn	S	6.06	72	89.55	t12.00	Cu Al2
04-001-0934	Anyuilite, syn	S	7.33	58	152.33	t12.00	Au Pb2
04-002-8721	Cuproiridsite, syn	S	9.8474		238.73	cF58.00	Cu Ir2 S4
04-002-9511	Elpasolite, syn	S	8.122		133.95	cF40.00	K2 Na Al F6
04-003-0647	Sellaite	S	4.625	3.052	65.28	tP6.00	Mg F2
04-003-0648	Rutile	S	4.594	2.959	62.45	tP6.00	Ti O2
04-003-0649	Cassiterite, syn	S	4.737	3.185	71.47	tP6.00	Sn O2

Right-click column to remove

Sort Numerically

Remove

Removing a display field

Modifying the Results Table

- To dynamically switch between different Field Sets, select the *Search Preference Set* box.

Results (1,874 of 301,282)

Search Preference Set: ICDD Defaults

PDF #	Mineral	AuthCell c	RedCell Vol	Pearson	Chemical Formula
04-001-0923	Khatyrkite	4.872	89.55	tI12.00	Cu Al2
04-001-0934	Anyuinite, S	5.658	152.33	tI12.00	Au Pb2
04-002-8721	Cuproirids		238.73	cF56.00	Cu Ir2 S4
04-002-9511	Elpasolite		133.95	cF40.00	K2 Na Al F6
04-003-0647	Sellaite	S 4.625	3.052	tP6.00	Mg F2
04-003-0648	Rutile	S 4.594	2.959	tP6.00	Ti O2

Switching between Field Sets in the Results form



Thank you for viewing our tutorial.
Additional tutorials are available at the ICDD website.

www.icdd.com

International Centre for Diffraction Data

12 Campus Boulevard

Newtown Square, PA 19073

Phone: 610.325.9814

Toll Free Number in US & Canada: 866.378.0331

Fax: 610.325.9823