

2021 - 2022 SALES CATALOG

- The Powder Diffraction File™
- JADE® Software



ICDD®
INTERNATIONAL CENTRE FOR DIFFRACTION DATA

**MP
I**
Materials Data™

$C_{26}H_{27}F_3N_2O_6$ - PDF® Entry 00-071-1635

Tezacaftor: Submitted by J. Kaduk, A. Gindhart, T. Blanton

OUR COLLABORATIVE PARTNERS INCLUDE:

Cambridge Crystallographic Data Centre (CCDC)

Cambridge, UK - Cambridge Structural Database (CSD)

Fachinformationszentrum Karlsruhe (FIZ)

Karlsruhe, Germany- Inorganic Crystal Structure Database (ICSD)

National Institute of Standards and Technology (NIST)

Gaithersburg, Maryland, USA

Material Phases Data System (MPDS)

Vitznau, Switzerland- Linus Pauling File (LPF)

PDF® DATABASES- WHY WE ARE THE BEST!

- More data, higher quality, more content, many types of solid-state reference data.
- The world's largest solid-state collection of minerals, metals and alloys, polymers, active pharmaceuticals, and commercial materials.
- The world's largest and most diverse (by formula) collection of inorganic structures.
- The world's largest collection of modulated structures.
- Extensive bibliographic collections - thousands of journals, hundreds of thousands of authors.
- Standardized data, nomenclature, and structural classifications plus brand names, trade names, mineral names, zeolite names, and common names of commercial materials.
- Identify materials accurately by utilizing the PDF's extensive subfile system that classifies materials by chemistry and application.
- New data is contributed annually by highly qualified grantees from around the world.
- PDF products are compatible with major diffraction vendor's software.



Quality Management System Certified
to ISO 9001:2015 by DEKRA

THE INTERNATIONAL CENTRE FOR DIFFRACTION DATA (ICDD®)

is a non-profit scientific organization dedicated to collecting, editing, publishing, and distributing powder diffraction data for the identification of materials. The membership of the ICDD consists of worldwide representation from academe, government, and industry.

TABLE OF CONTENTS

Featuring Materials Data® JADE Standard/JADE Pro	2-5
What's New	6-7
Scientific Database Products	8-14
▪ Which Database is Right for You?	
▪ Preferred Computer Specifications	
▪ PDF-4+	
▪ PDF-4+/Web	
▪ PDF-4/Axiom	
▪ PDF-4/Minerals	
▪ PDF-4/Organics	
▪ PDF-2	
Diffraction Analysis Software	15
Licensing Options	16-17
Website Links	18
▪ Purchasing Products	
▪ ICDD Licensed Distributors	
▪ ICDD Education- XRF- XRD- Rietveld Clinics	
▪ ICDD Conferences- Denver X-ray Conference, Pharmaceutical Powder X-ray Diffraction Symposium	
▪ Resources- <i>Advances in X-ray Analysis</i> , <i>Powder Diffraction Journal</i>	
▪ Grant-in-Aid	
ICDD Order Form	19-20
Ordering/Shipping Fast Facts	21

ONLINE RESOURCES

Visit our website at www.icdd.com. Our goal is to help you solve your material analysis problems. We provide reference articles, technical bulletins, tutorials, and instructional videos. Many tutorials focus on capabilities of the database and others illustrate methods used to analyze pharmaceuticals, polymers, and minerals. Search and browse documents from ICDD's Pharmaceutical Powder X-ray Diffraction Symposium and the ICDD Spring Meetings for free. We also provide open access to over 1,000 full publications from *Advances in X-ray Analysis* (AXA)- the proceedings of the Denver X-ray Conference (DXC).



The Powder Diffraction File is Now Available for



Download!

Get your 2022
PDF Database by
downloading from
the cloud.

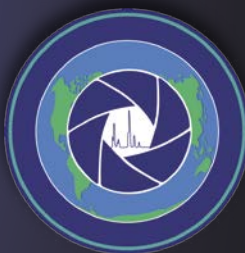
PDF-4+



PDF-2



PDF-4/Axiom



PDF-4/Organics



PDF-4/Minerals

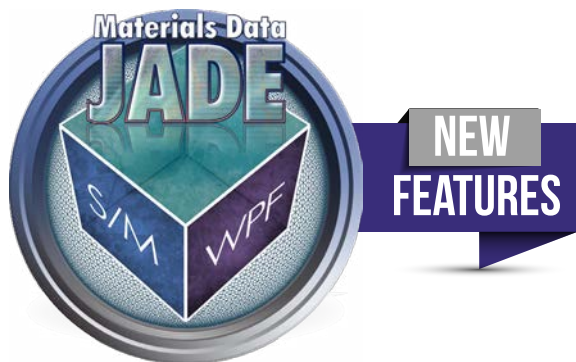


Contact info@icdd.com
for more information.

LICENSE OPTIONS TO FIT YOUR BUDGET!



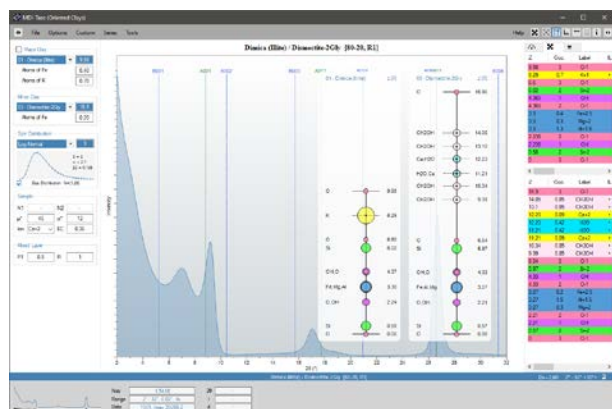
- **NEW** - Extended multi-year license terms - Let us know what you need!
- You can customize the license for a 1 to 9-year license term.
- 15% discount for new PDF-4+ or PDF-4/Organics and JADE Pro Bundles
- One-stop shopping: align PDF and JADE renewals for one billing and shipment
- **Save Money!** - Combine a new license for PDF-4+ and PDF-4/Organics
- PDF-2 10-year license - prepaid package
- PDF-4+Scholar - 10-year license for Academics
- PDF-4/Axiom 6-year and 9-year license - prepaid packages
- **SAVE time and money with ICDD's PDF-4 Subscriptions**
 - ICDD's subscriptions keep your database up-to-date with renewal pricing
 - ICDD offers automatic PDF-4 renewal shipments for convenience
 - Can't accept automatic shipments? ICDD will send a PDF-4 renewal reminder to keep you up-to-date with your subscription



JADE Pro

We're Constantly Adding Features

JADE Pro ships with an enhanced Toolkit. Toolkit includes a variety of utilities designed to work with JADE specifically for the market we serve. Toolkit is only available in JADE Pro and currently includes the following tools to extend your scientific inquiry.



For Oriented Clays - ClaySim

Performs simulations and analyses of (00l)-patterns from oriented clays based on the structure types introduced by R.C. Reynolds for single clays or two-component interstratified clays with editable structure and order parameters.

Microstructure Tool

Provides methods for the analysis of the residual stress and microstructure defects for various diffraction geometries and is applicable to cubic phases (fcc, bcc) following a profile fitting in JADE. Based on work by Prof. David Rafaja (Freiberg, Germany).

Laue Visualization

Laue simulations, stereographic projections, and alternative structure visualizations. This tool also exports multi-page Adobe PDF booklets structures.

XRD Digitizer

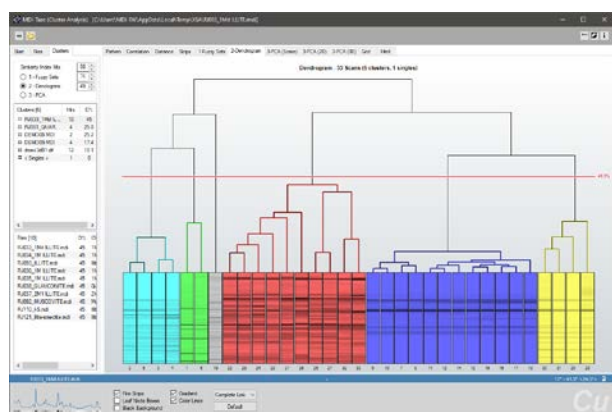
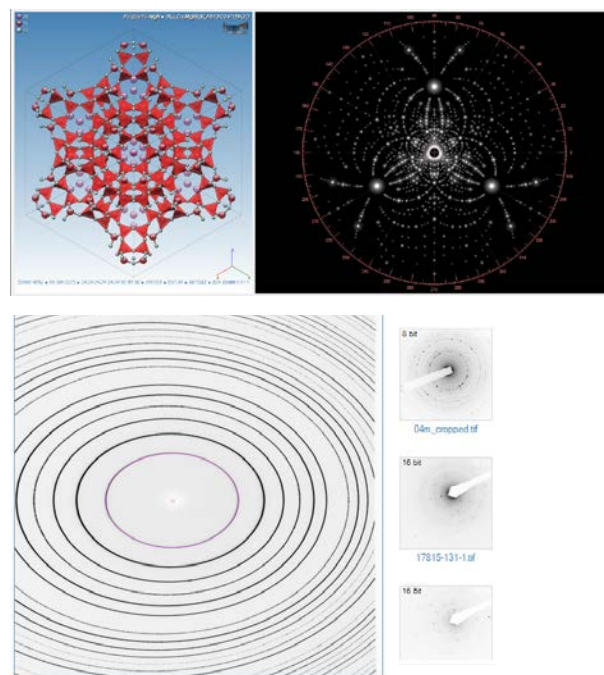
Similar to the JADE Pattern Digitizer found on our website, but with advanced image editing options to tweak any imperfections or remove artifacts from your image. Just take a picture of an XRD plot and this tool will convert it to a digital format that you can now work within JADE.

MDI SizeStrain

Designed for crystallite size and micro-strain analysis using X-ray powder diffraction data. This Toolkit supports both Warren-Averbach and Williamson-Hall methods for crystallite size determination.

Area Detector Tool

Built to extract powder patterns from images obtained with flat area detectors, so that they can easily be analyzed in JADE.



Charge Flipper

For structure solution using the charge flipping method. Optionally, it can also use the popular program Superflip for the phasing step.

Solve Structure

An alternative tool for creating the input files required for the charge flipper. It provides flowbar-guidance for the structure solution from powder patterns.

Cluster Analysis

Offers hierarchical Dendrogram Clustering with Principal Component Analysis in addition to Fuzzy Clustering.

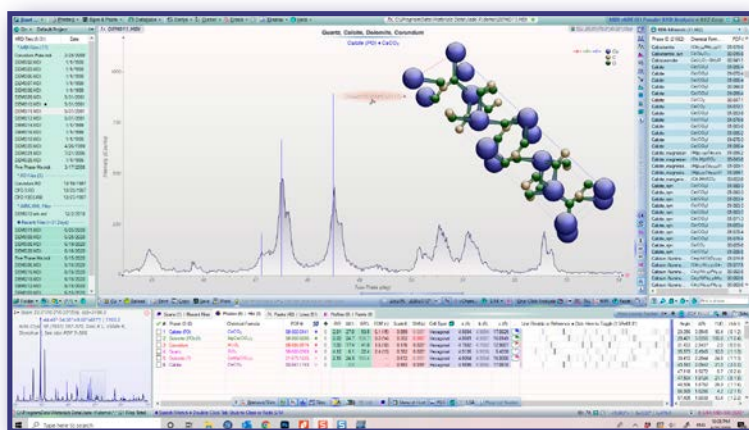


WORKING TOGETHER FOR YOU



JADE PRO

JADE Pro is all-inclusive! It includes all of the features of JADE Standard, plus batch processing Whole Pattern Fitting (WPF) and Rietveld refinement tools. JADE Pro features a floating network license that allows access on one concurrent system at a time, so when you aren't using it, someone else in your organization can access it. Discounted additional seats create access to more concurrent shareable licenses.



KEY POINTS

- All-inclusive - Phase ID, batch processing Whole Pattern Fitting (WPF) and Rietveld
- Floating network license can work as a shareable multi-seat license
- Discounted additional seats
- One-Click-Analysis™ for Whole Pattern Fitting (WPF)-automates your analysis
- Pattern Indexing (All Crystal Systems)
- Rietveld Structure Refinement (Atomic Parameters)
- Ab Initio Tools (Charge Flipping +)
- Cluster analysis of powder patterns
- Hardware independent application supports a wide range of diffractometers

JADE STANDARD

JADE Standard is a powerful, all-purpose powder XRD pattern viewer, processing and analysis program with emphasis on phase ID and quantification. JADE Standard makes the task of processing and understanding your collected data simple and your results concise and easy to understand.

SIMULATION AND VISUALIZATION

All Levels of JADE Standard

Simulate powder patterns to create your own custom database. Visualize a structure in 3D with motion. Visual cues throughout to better help you and your team understand the materials you are analyzing.

PHASE ID (S/M)

JADE Standard Level 2A or Level 3

Profile-based Search/Match with minor and trace phase ID or search on a single peak. Ability to include chemistry filters and unit cell data as well as preferred-orientation.

WHOLE PATTERN FITTING + RIETVELD

JADE Standard Level 2B or Level 3

Quantify weight percentages and identify minor phases quickly and easily.



KEY POINTS

- Reads all vendor pattern files
- Handles variable/fixed-slit data
- Auto peak search and multi-filter search
- Simulate powder patterns from crystal structures
- No annual renewal fee
- Used on a single workstation
- Hardware independent application - supports a wide range of diffractometers
- Available in three levels:
 - Level 1: Base
 - Level 2A: Search/Match
 - Level 2B: Whole Pattern Fitting (WPF)
 - Level 3: Search/Match and Whole Pattern Fitting
- Phase identification (S/M) (Level 2A and 3)
- Minor and trace phase ID (Level 2A and 3)
- WPF & Rietveld Refinement (Level 2B and 3)

JADE QA

Built for production line QA typically carried out by a technician and backed by the support of an analytical scientist utilizing all the power of JADE Pro. JADE QA was created to extend the power of Rietveld Quantitative Analysis (QA) to those in your organization responsible for overseeing consistencies in production.

Get More Power With **JADE** Pro

JADE is available in Pro and Standard. The different levels of JADE Standard are all perpetual licenses and sold without regular updates or any of JADE Pro's extensive set of extra features or the ability to share a license. Because it is a subscription, JADE Pro has a lower buy-in than JADE Standard. If you have JADE Classic, there still may be trade-in value for your JADE Classic towards the purchase of a current version of JADE.



JADE Pro

WPF and Rietveld Refinement (Unlimited Phases)	■	■
Gold Standard Quantitative Analysis	■	■
Seamless Integration with Database Retrieval	■	■
Auto-Loading of Structure Data from Database	■	■
Combination of Phases with/without Structure Data Weight%	■	■
Linking of Unit Cell, Phase Broadening Parameters	■	■
Custom d-I% (hkl, FWHM, Skew) to Fit Clay Phases	■	■
March-Dollase and Spherical Harmonics Orientation Function	■	■
Amorphous Content with/without Internal Wt% Standards	■	■
Atomic Occupancy and Bond Distance Constraints	■	■
Polynomial and Spline Curve Background Fitting	■	■
One-Click Phase ID and WPF/Rietveld Analysis	■	
Size and Strain Analysis (Warren-Averbach & Williamson Hall)	■	NEW
Pattern Indexing (All Crystal Systems)	■	
Simulate Series of Powder Patterns from Crystal Structures	■	
WPF and Rietveld Refinement Batch Processing	■	
Rietveld Structure Refinement (Atomic Parameters)	■	
Fourier Map Tools	■	
Ab Initio Tools (Charge Flipping +)	■	
Cluster Analysis of Powder Patterns	■	
Floating (Shareable) Network License	■	
Future Feature Updates via Subscription	■	
Extract Patterns from Area Detector 2D Images	■	
Digitize Any XRD Plot Image	■	NEW
Cluster Analysis Visualization Dendrograms	■	NEW
Toolkit App Version of ClaySim	■	NEW
Toolkit App for Microstructure Analysis	■	NEW
Toolkit App for Structure Solver Workflow	■	NEW
Laue Simulations and Visualization	■	NEW

JADE Standard

[illegible]

JADE Pro

■	Intuitive, State-of-the-Art UI	■
■	Reads All Vendor Pattern Files	■
■	Smart Column Data Importer	■
■	Merge Multi-Scans/Segments	■
■	1, 2 and 3D Pattern Overlay	■
■	Déjà Vu ID Similar Pattern Files	■
■	Handles Variable/Fixed-Slit Data	■
Multiple Display Axes and Any Diffraction Wavelength		■
Zero Offset Correction and Theta Calibration		■
Background Fitting/Batch Fitting/Removal		■
Auto Peak Search and Multi-Filter Search		■
Wide Variety of Report and Print Options		■
Includes Starter Database		■
ICDD PDF Database Access and Others		■
Multitude of Data Choices for Database Retrieval		■
View Crystal Structures and Reflection Planes		■
View Polyhedral, Calculate Bond Distances and Angles		■
Simulate Powder Patterns from Crystal Structures		■
Individual Analyst/Shared Work Environments		■
Support for Custom d-I% list for Phase Overlay		■
Excellent Profile Fitting and Batch Profile Fitting		■
RIR Quant, Size & Strain and Residual Stress		■
Line-Based Unit Cell and Batch Refinement		■
Structure Database Manager		■
Profile Based Search/Match (S/M)		■
Subfile + Chemistry + Unit Cell Filters in S/M		■
Minor and Trace Phase ID		■
Single Peak and Severely-Orientation S/M		■
Solid-Solution and Isotypical Phase ID		■

JADE Standard

[illegible]

Multiple Languages!

To better support diverse teams who share a license of JADE Pro across their organization and to ensure consistent results regardless of language, JADE can switch on the fly to Chinese or Japanese languages.

Announcing the Merging of TWO Gold-Standard Products Built for larger teams, easily scalable, and server-ready.

PDF-4+ (or PDF-4/Organics) and JADE Pro **SERVER EDITION**



multi-user

flexible floating license

remotely-accessible server license

Our workplaces and work habits are evolving, and this new database licensing model provides the flexibility that large organizations and academics need to meet the varying demands of their clients, teams, and students. Combine the most extensive and carefully curated database with the full power of JADE Pro to extend your ability, leverage your people, and liberate your data all while making your team, your budget, and your IT department happy!

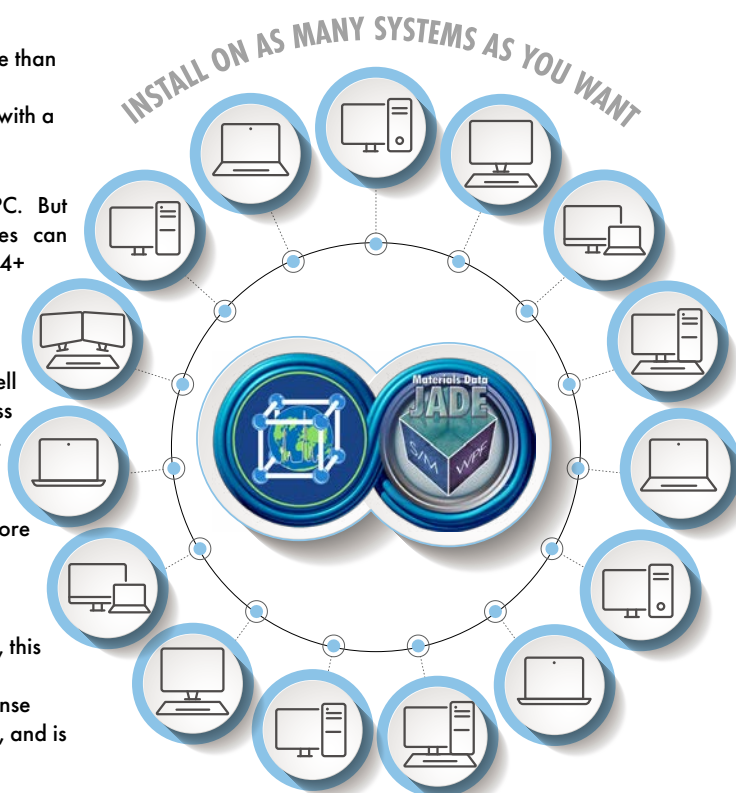
JADE Pro's floating license distribution model has been available for more than a decade, and now that same scalable productivity and convenience is available with PDF-4+ and PDF-4/Organics databases when combined with a 10 seat or more JADE Pro license.

Previously, our ICDD databases have all been tied to a single PC. But now for the first time, the PDF-4+ and PDF-4/Organics databases can float between users just like JADE Pro. Floating licenses for PDF-4+ and PDF-4/Organics databases will be available for vendor software.

This new licensing model means a team of 20 or more can easily share a 10-seat license. This can result in cost savings for your organization as well as a chance for you to extend the power to your team by providing access to BOTH the PDF database and JADE to as many individuals as you wish.

Both the PDF database and the JADE analysis software provide the same functionality as the individual products, but in coupling them in a 10 or more server license, significant savings can occur as more resources are available to more team members.

In addition to elevating access to these tools and resources for your team, this remote-access license eases the admin and IT costs of managing and maintaining multiple licenses. The combined PDF-4/JADE Pro server license runs off a single license key, is installable on your organization's network, and is shareable with as many PC's as you wish.



If this might be a solution that benefits your organization, please contact us at MDI@MaterialsData.com for pricing and further details.



WHAT'S NEW FOR 2021-2022

Introducing Release 2022 of the Powder Diffraction File

THE PRODUCT LINE INCLUDES:

PDF-4+
2022

PDF-4+/Web
2022

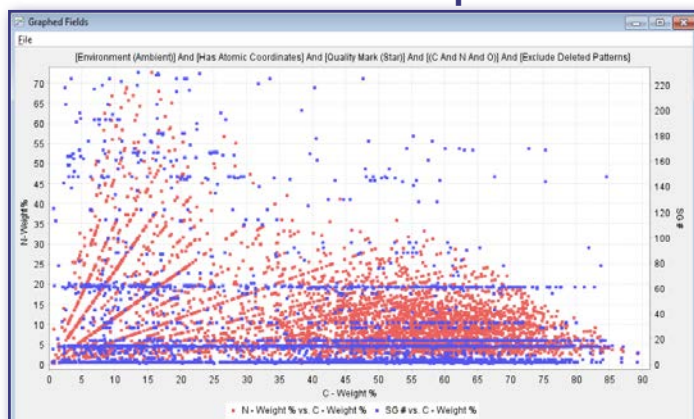
PDF-4/Axiom
2022

PDF-4/Minerals
2022

PDF-4/Organics
2022

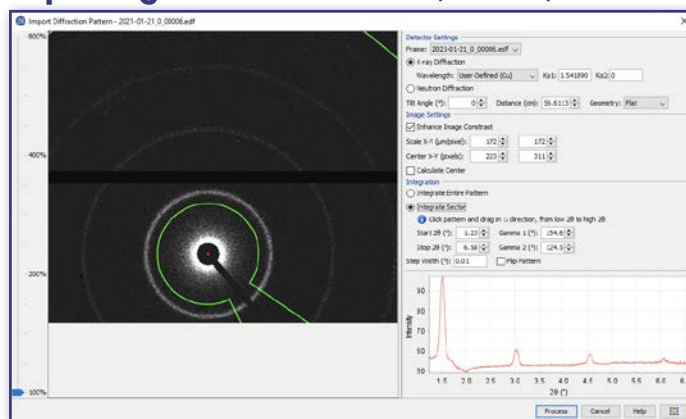
PDF-2
2022

Enhanced User-Created Graphs



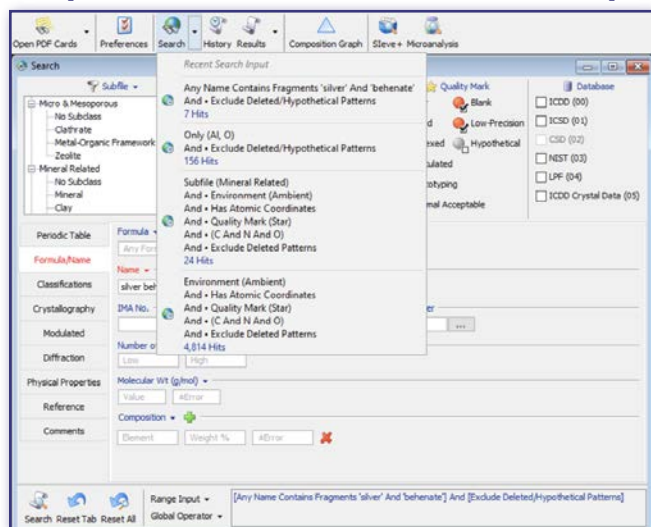
- Single or dual Y-axis plots
- Customize the size, shape, and color of graph data points for publication use

Importing Diffraction Data (Sieve+)



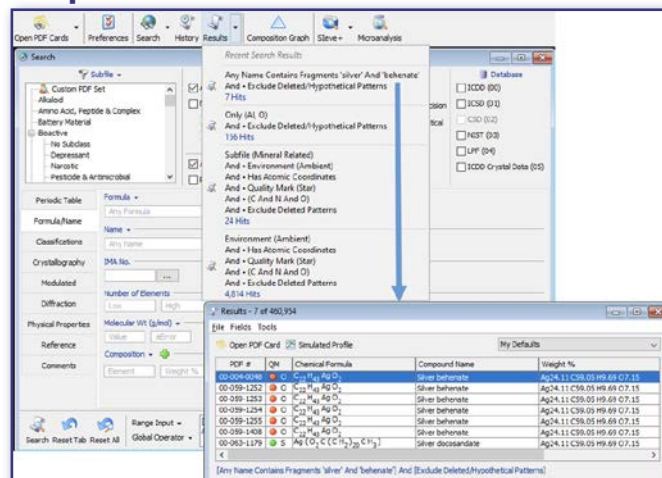
- New supported file types
 - Thermo-Fisher *.txt files
 - 1D diffraction patterns
 - ESRF *.edf files
 - 2D diffraction patterns
- Enhance contrast of imported 2D images (*.jpg, *.png, *.tiff)
- Optimized importing files over a network

Drop-Down Menu of Recent Search Input



- Easily re-populate search input from any past search using a new drop-down menu
- Save time by no longer having to re-enter search input
- Drop-down menu contains full search description and number of hits

Drop-Down Menu of Recent Search Results

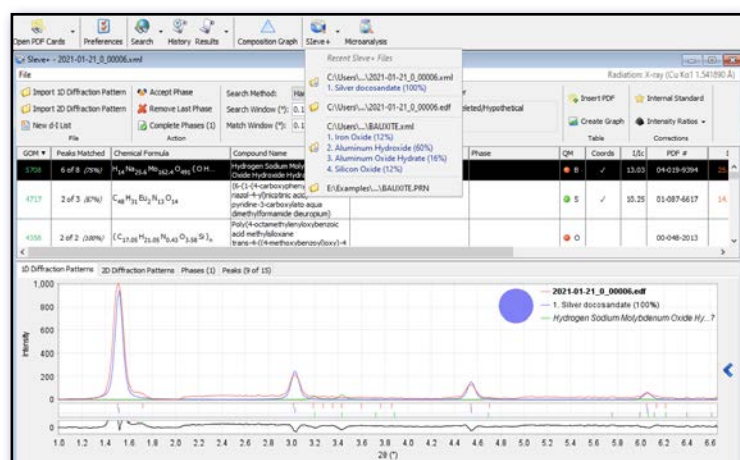


- Quickly toggle between previous search results using a new drop-down menu
- Drop-down menu contains full search description and number of hits



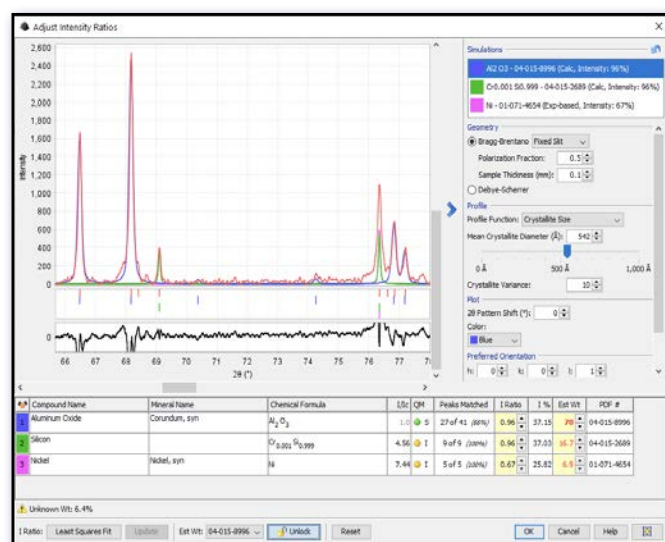
WHAT'S NEW FOR 2021-2022

Phase ID (Sleve+)



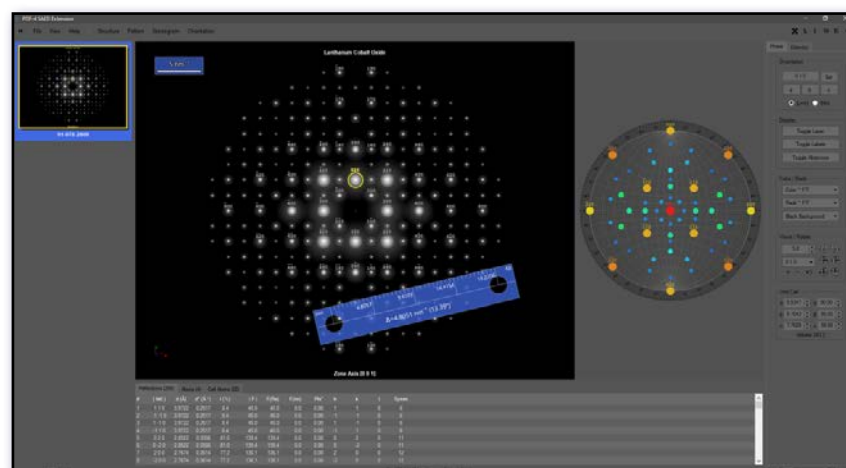
- Easily open previous Sleeve+ session files and imported data files using new drop-down menu
- Drop-down menu displays a preview of the accepted phases and their wt%
- All Sleeve+ sessions are supported
 - X-ray diffraction analysis
 - Neutron diffraction analysis
 - Constant wavelength
 - Time-of-flight
 - Electron diffraction analysis
 - 1D and 2D diffraction patterns

Phase ID (Sleve+)



- Dynamically change simulation settings in the Adjust Phases window
- Lock the wt% of a specific phase (as an internal standard) for RIR analysis
 - Using standard addition or XRF data
 - Unknown/amorphous wt% will be calculated and displayed
- User-modified values are highlighted in red
- Reset button allows the user to reset all changes

PDF-4 SAED Extension



- Import images and apply image processing options
- Simulation of freely rotatable SAED patterns from Structures
- Synchronized Structure Display and Stereographic Projection
- Searchable Reflection List with Absences
- Measurement Tools: Scalebar, Ruler, Protractor, Indexing Grid
- Measure Distances and Angles of clicked spots

WHICH ICDD DATABASE IS RIGHT FOR YOU?

	PDF-4+ 2022	PDF-4+/ WEB 2022	PDF-4/ AXIOM 2022	PDF-4/ MINERALS 2022	PDF-4/ ORGANICS 2022	PDF-2 2022
I WORK PRIMARILY WITH INORGANIC COMPOUNDS	✓	✓	✓			✓
I WORK PRIMARILY WITH ORGANIC COMPOUNDS					✓	
I WORK PRIMARILY WITH MINERALS				✓		
I WORK WITH ELECTRON DIFFRACTION/SYNCHROTRON	✓	✓		✓	✓	
I NEED TO WORK AT THE OFFICE AND HOME		✓				
I NEED TO DO QUANTITATIVE ANALYSIS						
RIETVELD	✓ *	✓ *	✓ *	✓ *	✓ *	
REFERENCE INTENSITY RATIO (RIR)	✓ †	✓ †	✓ *	✓ †	✓ †	✓ †
PATTERN FITTING	✓ *	✓ *	✓ *	✓ *	✓ *	
I NEED A DATABASE WITH ATOMIC COORDINATES	✓	✓	✓	✓	✓	
HOW MANY ENTRIES ARE IN THE DATABASE?	460,954	460,954	101,973	49,915	560,195	327,624
HOW MANY ENTRIES ARE NEW?	16,821	16,821	4,184	969	12,900	10,804
I am using vendor software for my analysis. Which databases will work with my vendor software? Global software vendors provide search/match software that interfaces with our databases. You need to check with your software vendor for compatibility.	✓	✓	✓	✓	✓	✓
WHAT IS THE LICENSE TERM FOR THE DATABASE?	1 YEAR	1 YEAR	3 YEAR	1 YEAR	1 YEAR	5 YEAR
MULTI-YEAR LICENSE AVAILABLE	✓	✓	✓	✓	✓	✓
SITE LICENSE AVAILABLE	✓	✓			✓	✓

* Using diffraction equipment manufacturer or vendor software.

† Using Sleeve or Sleeve+, diffraction equipment manufacturer or vendor software.

NEW~ Extended multi-year license terms- let us know what you need!

Preferred Computer Specifications

PDF Databases:

- Intel® Core™ 2 Duo processor or better
- NTFS file system required
- 4 GB system memory

JADE:

- Intel® Core™ i7, i5, or i3
- 8 GB system memory
- 24" or larger monitor - Your JADE experience will be richer on a larger screen.

Hard Disk Space Requirements

- PDF-2 2022- 4 GB
- PDF-4+ 2022- 10 GB
- PDF-4+/Web 2022- 0.5 GB
- PDF-4/Minerals 2022- 1.5 GB
- PDF-4/Organics 2022- 19 GB
- PDF-4/Axiom 2022- 3 GB
- JADE- 400 MB

Supported Microsoft® Operating Systems:

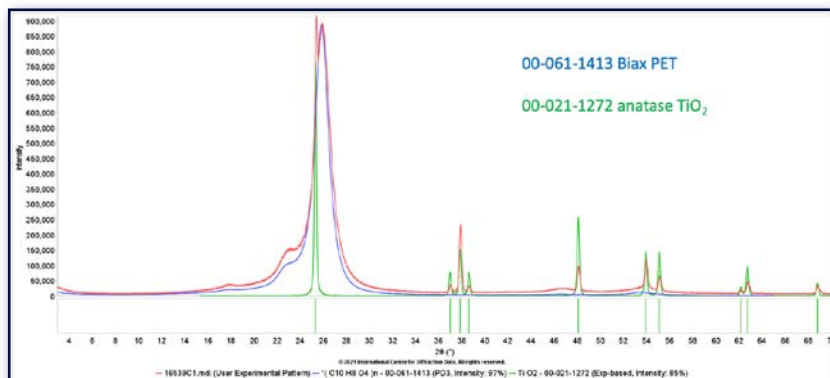
- Windows® 7 SP1
- Windows® 8
- Windows® 8.1
- Windows® 10



PDF-4+ 2022

Phase Identification and Quantitation

PDF-4+ combines the world's largest sources of inorganic diffraction data from crystals and powders into a single database.



Transdermal patch film comprised of biaxially oriented poly(ethylene terephthalate), PET, and anatase TiO₂. PET identified using raw data PD3 pattern.



KEY POINTS

- Rapid phase identification designed to support automated quantitative analyses
- Features 460,900+ entries with over 353,300+ having atomic coordinates
- 51,400+ entries for organic materials
- Integrated data mining software
- All entries have digital patterns for use in total pattern analysis
- More than 358,200+ entries have I/I_c values for quantitative analysis by Reference Intensity Ratio (RIR)
- Combines powder and single crystal data
- Includes crystalline, semi-crystalline, and amorphous solid-state materials
- World's largest and most diverse collection of structures for inorganic materials
- Extensive data mining is facilitated with 134 display fields coupled with 80 searches

PDF-4+ Purchase Options

PDF-4+ 2022	DVD CODE	USB CODE	DOWNLOAD CODE	2021-2022 LIST \$	2021-2022 ACADEMIC \$
New - Single License	F4D22	F4S22	F4L22	\$8,910	\$5,925
Renewal from 2021 to 2022	F4RD22	F4RS22	F4RL22	\$1,960	\$1,250
PDF-4+ and JADE Pro Bundle*					
New - Single License	BUJPF4D22	BUJPF4S22	BUJPF4L22	\$15,648	\$10,986
*Purchase a new license for PDF-4+ and JADE Pro					
PDF-4+ 2022 Multi-year License*					
Renewal - 3-year license	F4D23MR25	F4S23MR25	F4L23MR25	\$5,290	\$3,375
Renewal - 5-year license	F4D23MR27	F4S23MR27	F4L23MR27	\$8,330	\$5,315
PDF-4+ Scholar 2022 (10-Year License Package)*					
PDF-4+ New- Single License	F4D22	F4S22	F4L22		\$5,925
Sleeve+- New Single License	SWS422N	SWS422N	SWS422N		\$500
Scholar Multi-year	F4SPD23MR27	F4SPS23MR27	F4SPL23MR27	NA	\$6,125

\$12,550

Save Money! Take advantage of ICDD's Combo Site License- Request a quote today!

PDF-4+ 2022 Site License*

New Master License	F4D22M	F4S22M	F4L22M	\$8,910	\$5,925
New - additional licenses, each	F4D22C	F4S22C	F4L22C	\$1,960	\$1,250
Renewal - Yearly Master License	F4RD22M	F4RS22M	F4RL22M	\$1,960	\$1,250
Renewal - additional licenses, each	F4RD22C	F4RS22C	F4RL22C	\$750	\$495

PDF-4+ 2022 Site/Multi-year License*

Renewal - 3-year Master Site License	F4D23MR25M	F4S23MR25M	F4L23MR25M	\$5,290	\$3,375
Renewal - 3-year additional licenses, each	F4D23MR25C	F4S23MR25C	F4L23MR25C	\$2,250	\$1,485
Renewal - 5-year Master Site License	F4D23MR27M	F4S23MR27M	F4L23MR27M	\$8,330	\$5,315
Renewal - 5-year additional licenses, each	F4D23MR27C	F4S23MR27C	F4L23MR27C	\$3,750	\$2,475

PDF-2 to PDF-4+ Conversion

PDF-2 2021 to PDF-4+ 2022	F2421RDU22	F2421RSU22	F2421RLU22	\$1,960	\$1,250
PDF-2 2020 to PDF-4+ 2022	F2420RDU22	F2420RSU22	F2420RLU22	\$3,920	\$2,500
PDF-2 2019 to PDF-4+ 2022	F2419RDU22	F2419RSU22	F2419RLU22	\$5,880	\$3,750
PDF-2 2018 to PDF-4+ 2022	F2418RDU22	F2418RSU22	F2418RLU22	\$7,840	\$5,000

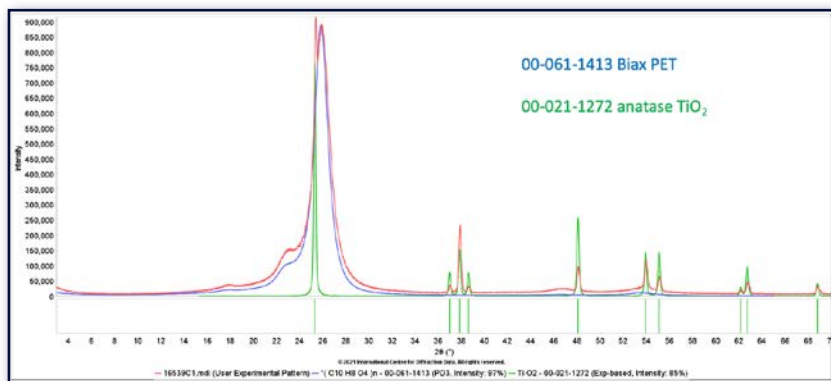
* Please see product policies on pages 16-17



PDF-4+/WEB 2022

Data on the Go

PDF-4+/Web provides portability to the PDF-4+ database via the internet. It enables access to the entire suite of programs and data files, so that it is equivalent to PDF-4+ 2022.



Transdermal patch film comprised of biaxially oriented poly(ethylene terephthalate), PET, and anatase TiO_2 . PET identified using raw data PD3 pattern.



KEY POINTS

- PDF-4+ database via the internet
- Access to the entire suite of PDF-4+ programs and data files
- Can be used on any computer that meets the specifications
- Requires access to a high-speed internet connection
- Delivered as a USB compatible dongle*
- Installation and renewals are handled via the internet
- One (1) year license serviced by subscription



SYSTEM REQUIREMENTS

PDF-4+/Web 2022 requires a fully-powered USB port, web browser, and ability to open TCP/IP ports through any existing firewalls. Connectivity speed should be at least 10 Mbps or higher.*

*see Preferred Computer Specifications, page 8



SUPPORTED BROWSERS



Internet Explorer



Edge



Chrome



Firefox

PDF-4+/Web Purchase Options

PDF-4+/Web 2022

	DONGLE CODE	2021-2022 LIST \$	2021-2022 ACADEMIC \$
New - Single License	W422	\$8,910	\$5,925
Renewal from 2021 to 2022	W4R22	\$1,960	\$1,250

PDF-4+/Web 2022 Multi-year License*

Renewal - 3-year license	W423MR25	\$5,290	\$3,375
Renewal - 5-year license	W423MR27	\$8,330	\$5,315

PDF-4+/Web 2022 Site License*

New Master License	W422M	\$8,910	\$5,925
New - additional licenses, each	W422C	\$1,960	\$1,250
Renewal - Yearly Master License	W4R22M	\$1,960	\$1,250
Renewal - additional licenses, each	W4R22C	\$750	\$495

Save Money! Take advantage of ICDD's Combo Site License- Request a quote today!

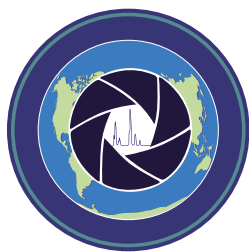
PDF-4+/Web 2022 Site/Multi-year License*

Renewal - 3-year Master Site License	W423MR25M	\$5,290	\$3,375
Renewal - 3-year additional licenses, each	W423MR25C	\$2,250	\$1,485
Renewal - 5-year Master Site License	W423MR27M	\$8,330	\$5,315
Renewal - 5-year additional licenses, each	W423MR27C	\$3,750	\$2,475

PDF-4+/Web Conversion

PDF-2 2021 to PDF-4+/Web 2022	W2W21RU22	\$1,960	\$1,250
PDF-2 2020 to PDF-4+/Web 2022	W2W20RU22	\$3,920	\$2,500
PDF-2 2019 to PDF-4+/Web 2022	W2W19RU22	\$5,880	\$3,750
PDF-2 2018 to PDF-4+/Web 2022	W2W18RU22	\$7,840	\$5,000
PDF-4+ 2021 to PDF-4+/Web 2022	W4W21RU22	\$1,960	\$1,250

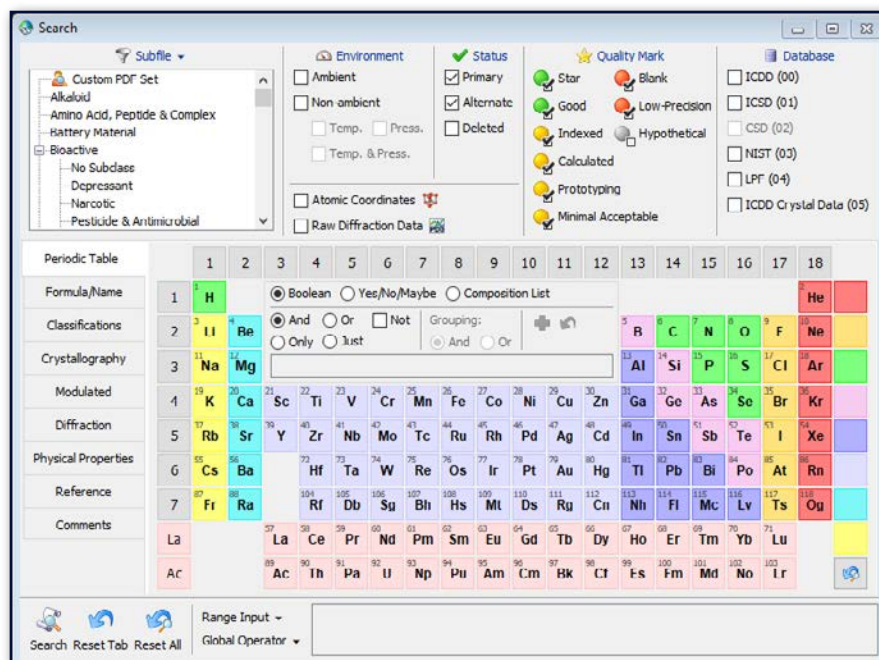
* Please see product policies on pages 16-17



PDF-4/AXIOM 2022

Quality plus Value

PDF-4/Axiom is focused on identification and quantitation with data entries selected for benchtop users.



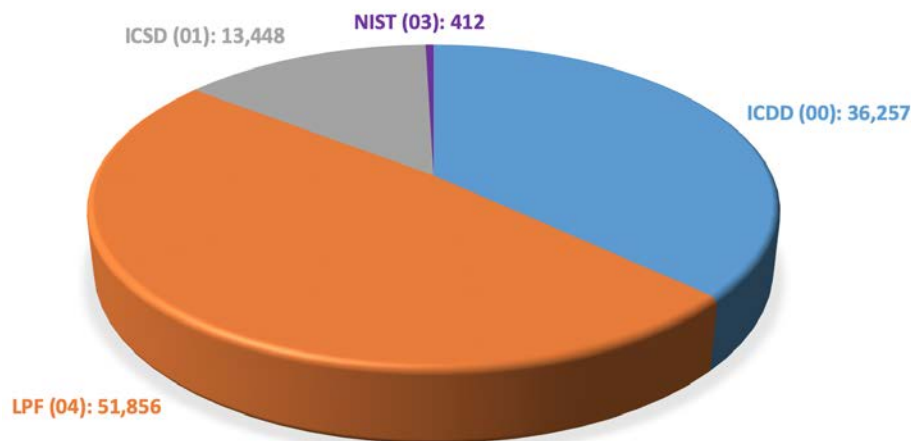
KEY POINTS

- Cost-effective
- Single License: Three (3) year license term
- Optional: Two additional seats (three (3) year license term)
- Six (6) year and nine (9) year prepaid packages
- No subscription
- Featuring 101,900+ entries, including inorganic and organic entries
- 71,560+ entries with atomic coordinates
- Data focused on ambient entries
- Fundamental mineral entries
- ICDD data mining software
- ICDD's search identification software (Sieve+) is not included (Available with PDF-4+, PDF-4/Minerals, and PDF-4/Organics)

Requires JADE, diffraction equipment manufacturer, or vendor software for phase identification applications

Database Sources

(See inside front cover for ICDD's collaborative partners)



PDF-4/Axiom Purchase Options

PDF-4/Axiom 2022	DVD CODE	USB CODE	DOWNLOAD CODE	2021-2022 LIST \$	2021-2022 ACADEMIC \$
New License - 3-years	AX4D22	AX4S22	AX4L22	\$3,550	\$2,550
Two Additional Seats (each seat: single PC installation)	AX4D22MS	AX4S22MS	AX4L22MS	\$1,000	\$500
PDF-4/Axiom 2022 Packages*					
PDF-4/Axiom - 6-years	AX4D6YR	AX4S6YR	AX4L6YR	\$7,100	\$5,100
PDF-4/Axiom - 9-years	AX4D9YR	AX4S9YR	AX4L9YR	\$10,650	\$7,650

*Purchase two or three Single Licenses (Release 2022, Release 2025, and Release 2028)

- Each PDF-4/Axiom product is licensed for three (3) years
- Shipping fees for all databases billed on the original invoice

* Please see product policies on pages 16-17



PDF-4/MINERALS 2022

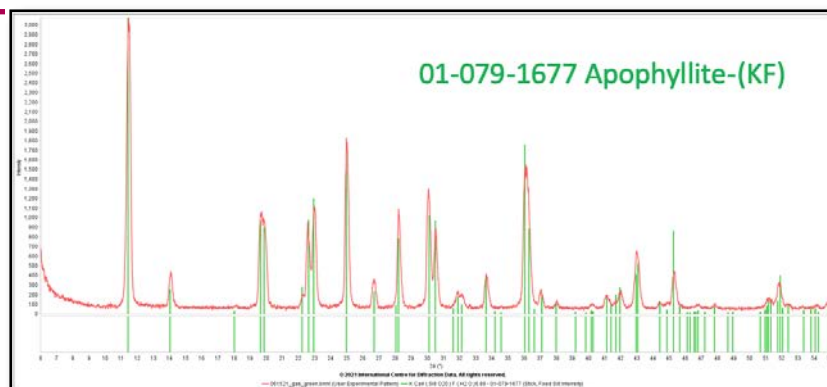
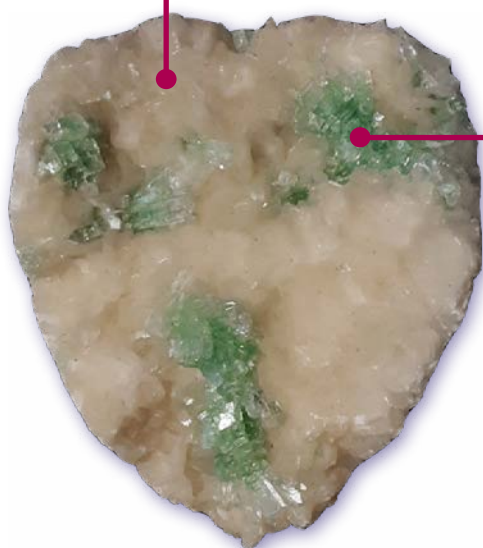
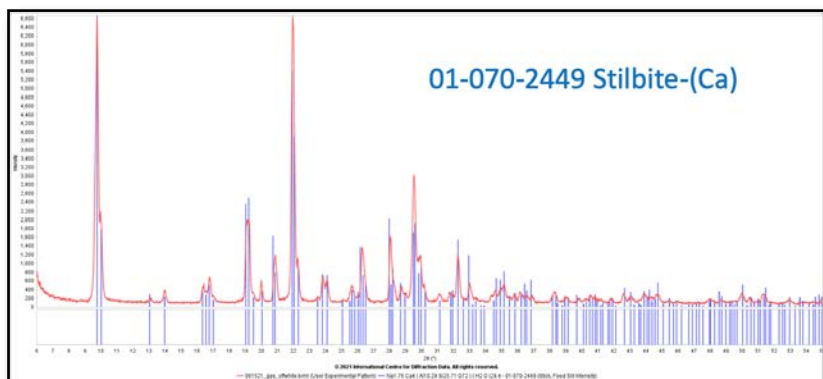
Comprehensive Mineral Collection

PDF-4/Minerals is the most comprehensive collection of mineral data in the world! Ninety-seven percent of all known mineral types, as defined by the International Mineralogical Association (IMA), are represented in the database.



KEY POINTS

- Rapid phase identification, plus support for automated quantitative analyses
- Features 49,900+ entries, including 41,300+ entries with atomic coordinates
- Integrated data mining software
- All entries have digital patterns for use in total pattern analysis
- More than 38,300 entries have I/I_c values for quantitative analysis by Reference Intensity Ratio (RIR)
- Combines powder and single crystal data
- Classified by IMA designations
- A subset of the PDF-4+ database with all the features and capabilities, targeted to minerals and mineral related compounds
- Extensive data mining is facilitated with 134 display fields coupled with 80 searches
- One (1) year license serviced by subscription



Green apophyllite on a stilbite matrix. Raw data patterns (red) collected using CuK α radiation. Sample from Maharashtra, India.

PDF-4/Minerals Purchase Options

PDF-4/Minerals 2022	DVD CODE	USB CODE	DOWNLOAD CODE	2021-2022 LIST \$	2021-2022 ACADEMIC \$
New - Single License	MN4D22	MN4S22	MN4L22	\$1,720	\$1,170
Renewal from 2021 to 2022	MNR4D22	MNR4S22	MNR4L22	\$935	\$610
PDF-4/Minerals 2022 Multi-year License*					
Renewal - 3-year license	MND423MR25	MNS423MR25	MNL423MR25	\$2,805	\$1,830
Renewal - 5-year license	MND423MR27	MNS423MR27	MNL423MR27	\$4,675	\$3,050

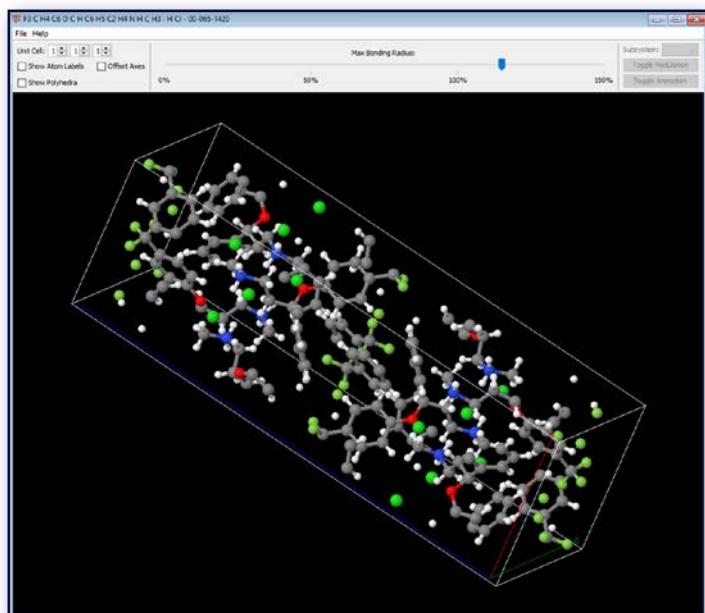
* Please see product policies on pages 16-17



PDF-4/ORGANICS 2022

Solve Difficult Problems, Get Better Results

PDF-4/Organics database is a highly targeted collection, with special focus on materials used in commercial and regulatory fields. It provides the best of both worlds by including single crystal and powder diffraction data together in a single, edited, and standardized database.



PDF Entry 00-065-1420 3D Structure, fluoxetine hydrochloride



KEY POINTS

- Collection includes pharmaceuticals, excipients, and polymers
- Features 560,100+ entries, including 156,100+ entries with atomic coordinates
- Integrated data mining software
- Sleve+ search-indexing software included as an added value
- Combines crystalline, semi-crystalline, and amorphous solid-state materials
- Combines powder and single crystal data
- Highly targeted collection with special focus on materials used in commercial and regulatory fields
- Enhanced identification for crystalline, nano, and amorphous materials
- One (1) year license serviced by subscription

Includes 7,200+ new CSD entries from our partnership with Cambridge Crystallographic Data Centre

REQUEST A QUOTE TODAY!

PDF-4/Organics Purchase Options

PDF-4/Organics 2022	DVD CODE	USB CODE	DOWNLOAD CODE	2021-2022 LIST \$	2021-2022 ACADEMIC \$
New - Single License	OR4D22	OR4S22	OR4L22	\$8,910	\$5,925
Renewal from 2021 to 2022	OR4RD22	OR4RS22	OR4RL22	\$1,960	\$1,250
PDF-4/Organics and JADE Pro Bundle*					
New - Single License	BUJPOR4D22	BUJPOR4S22	BUJPOR4L22	\$15,648	\$10,986
*Purchase a new license for PDF-4/Organics and JADE Pro					
PDF-4/Organics 2022 Multi-year License*					
Renewal - 3-year license	OR4D23MR25	OR4S23MR25	OR4L23MR25	\$5,290	\$3,375
Renewal - 5-year license	OR4D23MR27	OR4S23MR27	OR4L23MR27	\$8,330	\$5,315
PDF-4/Organics 2022 Site License*					
New Master License	OR4D22M	OR4S22M	OR4L22M	\$8,910	\$5,925
New - additional licenses, each	OR4D22C	OR4S22C	OR4L22C	\$1,960	\$1,250
Renewal - Yearly Master License	OR4RD22M	OR4RS22M	OR4RL22M	\$1,960	\$1,250
Renewal - additional licenses, each	OR4RD22C	OR4RS22C	OR4RL22C	\$750	\$495
PDF-4/Organics 2022 Site/Multi-year License*					
Renewal - 3-year Master Site License	OR4D23MR25M	OR4S23MR25M	OR4L23MR25M	\$5,290	\$3,375
Renewal - 3-year additional licenses, each	OR4D23MR25C	OR4S23MR25C	OR4L23MR25C	\$2,250	\$1,485
Renewal - 5-year Master Site License	OR4D23MR27M	OR4S23MR27M	OR4L23MR27M	\$8,330	\$5,315
Renewal - 5-year additional licenses, each	OR4D23MR27C	OR4S23MR27C	OR4L23MR27C	\$3,750	\$2,475

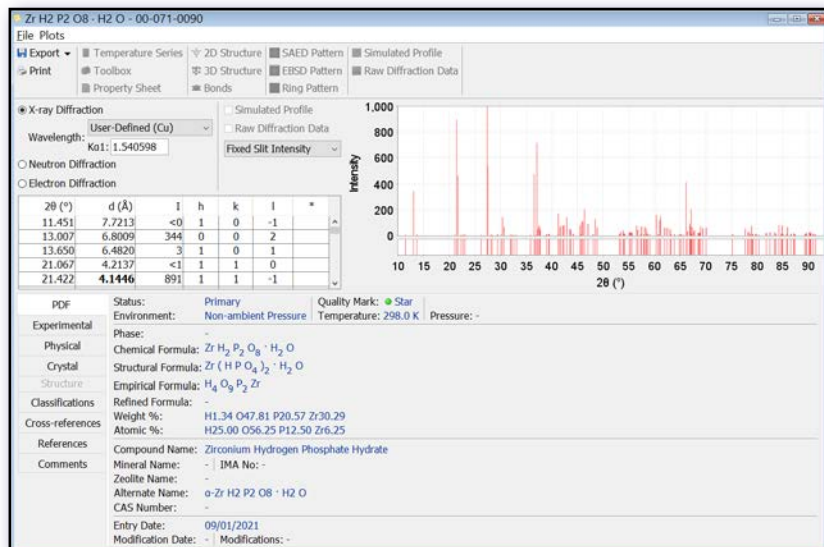
* Please see product policies on pages 16-17



PDF-2 2022

Phase Identification + Value

PDF-2 is designed for inorganic materials analyses. In addition, common organic materials from ICDD are added to the database to facilitate rapid materials identification.



KEY POINTS

- Features 327,600+ entries
- 224,900+ entries have I/I_c values for quantitative analysis by Reference Intensity Ratio (RIR)
- Integrated data mining software
- Sleve search-indexing software included as an added value
- Combines powder and single-crystal data
- Rapid data mining with our 57 display fields coupled with 71 searches
- Five (5) year license

**Take Advantage of ICDD's PDF-2
10-Year License Package**

REQUEST A QUOTE TODAY!

PDF-2 Purchase Options

PDF-2 2022: 5 (five) year License	DVD CODE	USB CODE	DOWNLOAD CODE	2021-2022 LIST \$	2021-2022 ACADEMIC \$
New - Single License	C2D22PN	C2S22PN	C2L22PN	\$8,910	\$5,925
Renewal - from 2021 to 2022	C2D21PU22	C2S21PU22	C2L21PU22	\$1,960	\$1,250
Renewal - from 2020 to 2022	C2D20PU22	C2S20PU22	C2L20PU22	\$3,920	\$2,500
Renewal - from 2019 to 2022	C2D19PU22	C2S19PU22	C2L19PU22	\$5,880	\$3,750
Renewal - from 2018 to 2022	C2D18PU22	C2S18PU22	C2L18PU22	\$7,840	\$5,000
PDF-2 2022: 10 (ten) year License Package					
New licenses (2022 and 2027)	PD2D10YR	PD2S10YR	PD2L10YR	\$17,820	\$11,850
Purchase Two (2) New PDF-2 Single Licenses (Release 2022, Release 2027)					
PDF-2 2022 Site License*					
New Master License	C2D22PNM	C2S22PNM	C2L22PNM	\$8,910	\$5,925
New - additional licenses, each	C2D22PNC	C2S22PNC	C2L22PNC	\$1,960	\$1,250
Renewal - Yearly Master License	C2D21PU22M	C2S21PU22M	C2L21PU22M	\$1,960	\$1,250
Renewal - additional licenses, each	C2D21PU22C	C2S21PU22C	C2L21PU22C	\$750	\$495
PDF-2 to PDF-4+ Conversion					
PDF-2 2021 to PDF-4+ 2022	F2421RDU22	F2421RSU22	F2421RLU22	\$1,960	\$1,250
PDF-2 2020 to PDF-4+ 2022	F2420RDU22	F2420RSU22	F2420RLU22	\$3,920	\$2,500
PDF-2 2019 to PDF-4+ 2022	F2419RDU22	F2419RSU22	F2419RLU22	\$5,880	\$3,750
PDF-2 2018 to PDF-4+ 2022	F2418RDU22	F2418RSU22	F2418RLU22	\$7,840	\$5,000

* Please see product policies on pages 16-17

SIEVE/SIEVE+ 2022

Search and Identify

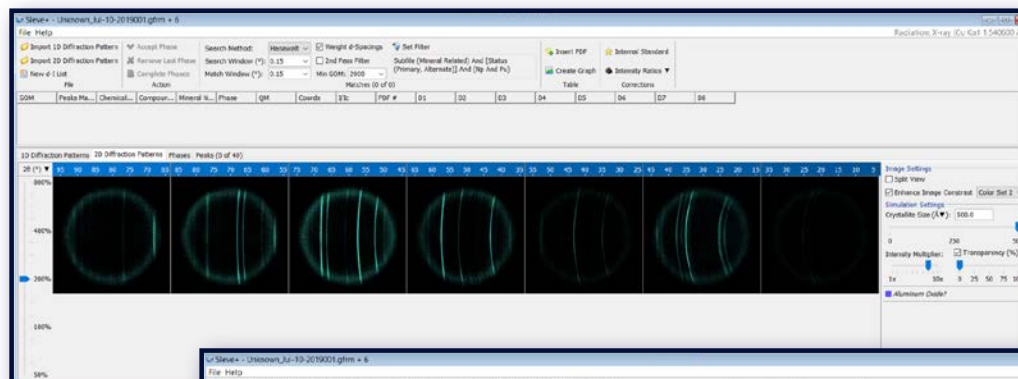
ICDD's search identification programs, Sieve for PDF-2 and Sieve+ for PDF-4 are designed to search and identify unknown materials. Sieve/Sieve+ are integrated into the ICDD databases to allow the use of the extensive data mining interfaces, searches, and sorts available to improve accuracy and precision of the identification process.



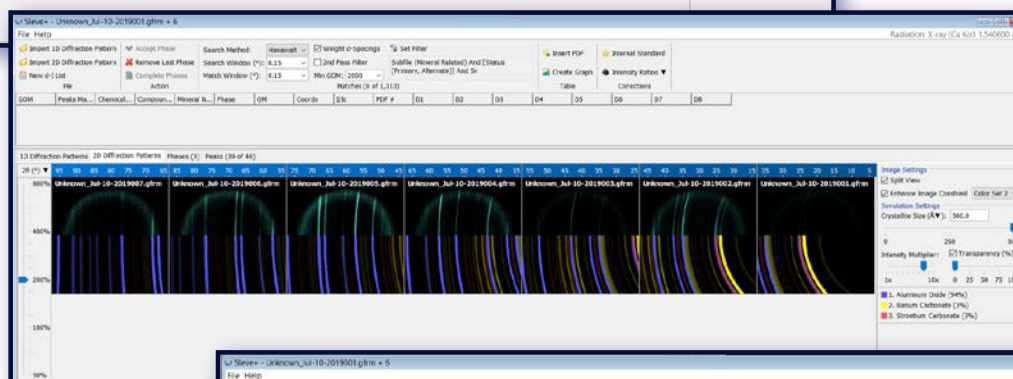
KEY POINTS

- Designed to search and identify unknown materials
- Complementary with most commercial software programs
- Match filter algorithms- better results, more accuracy
- Identify non-crystalline materials and complex multi-phase specimens
- Strength of Sieve/Sieve+ is evident in the analysis of minor and trace phases
- Supports X-ray, synchrotron, electron[†], and neutron[†] data
- "Intelligent" RIR for semi-quantitative analysis[†]

[†] PDF-4 only

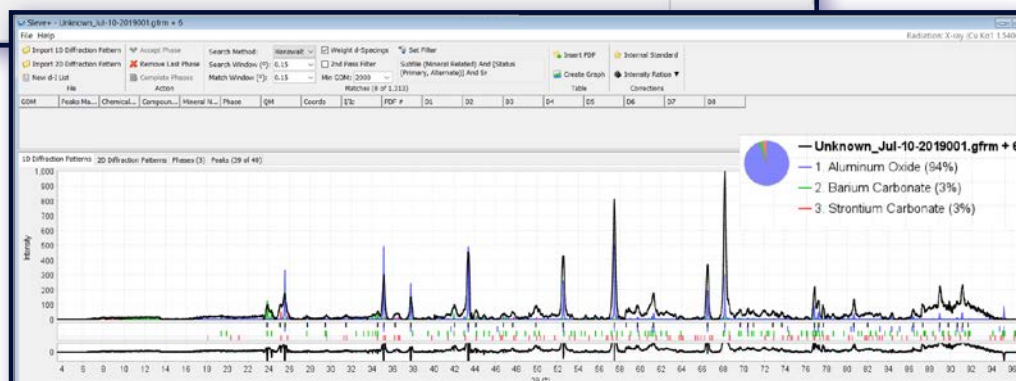


Seven 2D XRD raw data patterns imported and displayed using Sieve+. Data collected on a single sample with different detector positions using CuKα radiation.



Seven 2D XRD raw data patterns with phase identification overlay using Sieve+. Data collected on a single sample with different detector positions using CuKα radiation.

Phase identification results from 2D XRD data merged and plotted in 1D format, using Sieve+. Data collected on a single sample with different detector positions using CuKα radiation.



Sieve+ Purchase Options

Sieve+ 2022	DVD CODE	USB CODE	DOWNLOAD CODE	2021- 2022 LIST \$	2021- 2022 ACADEMIC \$
New - Single License	SWS422N	SWS422N	SWS422N	\$760	\$500
Renewal from 2021 to 2022	SWS422U	SWS422U	SWS422U	\$450	\$280
Sieve+ 2022 Multi-year License*					
Renewal - 3-year license	SWS423MR25	SWS423MR25	SWS423MR25	\$1,215	\$760
Renewal - 5-year license	SWS423MR27	SWS423MR27	SWS423MR27	\$1,915	\$1,190

*Please see product policies on pages 16-17

LICENSE

ICDD single user databases and software products are licensed for use on a single PC (see page 10 in this catalog for information on PDF-4+/ Web licensing). Database and software licenses grant end-users a limited, nonexclusive, and nontransferable license to access the contents of the product for personal or internal business purposes; and to download such contents on the hard drive of a single computer, as needed, to facilitate data processing. It cannot be installed, accessed, or displayed on more than one PC without purchasing additional licenses or a multi-user server license. License terms vary by product.

Installation & Registration: ICDD databases require registration to comply with the legal requirements of our collaborative agreements. Registration is required upon installation. This will ensure that your database license will correspond closely with your product subscription. Please note that your product subscription is based on the month of the original invoice, not the date of the license registration key. The integrated registration software will guide users through the registration process. The registration information can be sent to ICDD using the internet (preferred), email, fax, or mail. A registration key for the full license will be sent to the user within 48 hours of receipt of the registration information (Monday through Friday). If you have not heard from ICDD within 48 hours, please send a communication noting that it is a second request. You can contact ICDD by email: registration@icdd.com; fax: 610.325.9823; or call us at 610.325.9814.

Registration License Key: Registration is required upon installation. The license key is issued on the date of registration and will allow access to the database in accordance with the purchased product license term.

Contact ICDD for PDF-4+/Web registration information - info@icdd.com

Database License Term: This is the amount of time available for access to the purchased database (see License terms).

Product Subscription: The PDF-4 product line, as well as all database site and multi-year licenses, are serviced by subscription. All subscriptions are based on the original invoice date. This means that PDF-4 renewals, site licenses, and multi-year licenses are due on the month of the original invoice. For example, if your original invoice was in May 2021, then your renewal will be due in May 2022.

PDF-2: The license term for PDF-2 with Sleve is five (5) years.

PDF-4/Axiom: The license term for PDF-4/Axiom is three (3) years.

PDF-4+, PDF-4+/Web, PDF-4/Minerals, and PDF-4/Organics are licensed for one (1) year. ICDD offers a subscription service that provides automatic renewals for your PDF-4 product(s). Prior to the expiration of your license, ICDD will automatically invoice and ship your PDF-4 renewal based on your original invoice date. If you cannot take advantage of the automatic subscription, contact sales@icdd.com.

NOTE: When renewing your PDF license, ICDD recommends that you contact ICDD or your software vendor to determine your data analysis software requirements.

RELEASE 2022

LICENSE TERMS

Product	License Term
PDF-2 with Sleve	5 years
PDF-4/Axiom	3 years
PDF-4 products*	1 year
Sleve+*	1 year

* Serviced by subscription featuring automatic annual renewals.

PRODUCT LICENSE POLICIES

Academic Pricing Policy

An academic price is awarded to degree-granting (Assoc., B.S., M.S., Ph. D.) institutions and organizations that provide resources for student's course work that are affiliated with the degree-granting institution. Institutions may be required to submit documentation to verify eligibility. Please consult ICDD's price list for eligible products.

Site License Policy

ICDD's standard site license policy is designed for a multiuser laboratory to facilitate multiple licenses of the PDF-2 or PDF-4 databases at a single site. A single site is defined by the building where the database will be installed. Multiple users in different buildings need to purchase separate site licenses for each building.

A standard ICDD site license includes the purchase of a Master License, and the purchase of Secondary Licenses (discounted additional licenses). Customers may purchase an unlimited number of additional licenses at discounted pricing. The number of computers that will be running the database in a single building determines the number of licenses.

An ICDD multi-user server license is a bundled software product that includes ICDD's JADE Pro and either PDF-4+, PDF-4 Organics, or both. The bundle server license is scaled to serve high-volume research environments (10-license minimum required) and is a floating, remotely accessible, and network-shareable license.

Note: PDF-4/Axiom and PDF-4/Minerals are excluded from site license options.

LICENSE CONTINUED

Single License → Site License

Customers with a single license may add additional licenses to create a site. To qualify for additional license pricing, the single license must be current. If necessary, customers may need to renew their single license to the current release, then add an additional license to create the site.

Site License Renewals

To take advantage of the site license renewal pricing, both the Master License and the Secondary Licenses of the database must be renewed yearly. To renew a site license, ICDD requires that the Master License and all Secondary Licenses be purchased concurrently on a single purchase order.

Combo Site License Subscription

ICDD offers combination site licenses that allows for multiple licenses of the PDF-2, PDF-4+, PDF-4+/Web, or PDF-4/Organics databases at a single site. The combo site licenses are serviced by subscription with yearly automatic renewals based on the anniversary of the original invoice date for the PDF-2, PDF-4+, PDF-4+/Web, or PDF-4/Organics databases. ICDD will automatically bill and ship renewal licensed products as specified in ICDD's then-current price list. If you cannot take advantage of the automatic subscription, contact sales@icdd.com.

Note: PDF-2 can only be combined with PDF-4+ or PDF-4+/Web.

Multi-year Site License

In response to customer requests, ICDD offers multi-year site licenses. The multi-year site license is offered as a convenience to our customers using site license pricing. This license is serviced by subscription and is available for a PDF-4+, PDF-4+/Web, or PDF-4/Organics site.

Note: (PDF-2, PDF-4/Axiom, and PDF-4/Minerals databases are not eligible).

Multi-year License Policy

To assist customers with their yearly renewals, ICDD offers multi-year licenses that allow you to prepay for future renewals. The multiyear license renewal pricing provides savings on yearly license renewals, along with fixed pricing on the renewal for the purchased license term. Multi-year pricing is available for PDF-4+, PDF-4+/Web, PDF-4/Minerals, and PDF-4/Organics. If the price for these products increases during your multi-year license period, you will not be billed the difference.

To purchase a multi-year license, users need to purchase a new license to the current release of the PDF or renew their license to the current release using the current prices. Users may then purchase additional years for their license. All shipping charges will be billed on the original invoice. The multi-year license is serviced by subscription with yearly automatic renewals based on the anniversary of the original invoice date for PDF-4 databases. For each year in your multi-year license, you will receive the newest release of your PDF product. You will need to install and register your new

product for each release.

Sleve+, ICDD's search-indexing software is linked to the PDF-4 release year. Customers utilizing this software are encouraged to purchase a multi-year license for the software along with their multi-year license for the database. The multi-year license for Sleeve+ is serviced by subscription as described in the paragraph above.

Multi-year license renewal pricing for PDF-4/Minerals is offered as a convenience to our customers. It is not subject to the discount offered with our other multi-year licenses.

Note: PDF-2 and PDF-4/Axiom databases are not eligible for multi-year licensing options; however ICDD offers prepaid packages. Visit page 11 for PDF/Axiom and page 14 for PDF-2. (See below)

PDF-4+Scholar Multi-year License for Academics- 10-Year License



PDF-4+Scholar is an incentive available solely for our academic customers who qualify under ICDD's academic license policy.

PDF-4+Scholar is a ten (10) - year multi-year license package for PDF-4+, which includes a license for Sleeve+. It is identical to

PDF-4+ in content and capability. The 10-year license includes purchases of PDF-4+ and Sleeve+ (new or renewal to the current product release), plus the PDF-4+Scholar multi-year license. During your 10-Year license, you will receive six (6) products of the newest release of the PDF-4+ and Sleeve+. The first five (5) PDF-4+ products will be licensed for one (1) year. The final sixth (6th) PDF-4+ product will be the PDF-4+Scholar product, which is licensed for five years.

The 10-Year license is available on DVD, USB, or download.

Like all PDF-4 products, the 10-Year license is handled by automatic subscription. The yearly automatic renewals will be shipped based on the anniversary of the original invoice for the 10-Year license. Shipping fees for all databases are billed on the original invoice.

For more information, please visit:
www.icdd.com/pricing-policies/

Product warranty is on the preferred computer specifications associated with the product release. If you need to change your computer specifications, ICDD recommends that you reference the ReadMe.txt or product insert for your product release to check for compatibility.

Take advantage of ICDD's prepaid packages

- PDF-2: 10-Year license: Page 14
- PDF-4+Scholar: 10-Year license for Academics: Page 9
- PDF-4/Axiom: 6-Year and 9-Year license prepaid: Page 11

VISIT OUR WEBSITE FOR MORE INFORMATION:

PURCHASING PRODUCTS

www.icdd.com → Products → Purchase Products

ICDD Licensed Distributors

www.icdd.com/distributors/

ICDD works with a global network of licensed distributors to provide ICDD products throughout the world. Our network includes equipment manufacturers, regional distributors, and licensed software developers who program commercial data analysis programs that work seamlessly with our databases.

ICDD EDUCATION

www.icdd.com/icdd-education

ICDD offers a variety of educational opportunities designed for both the new and experienced user. Our clinics boast a high instructor-to-student ratio. Our experienced instructors have diverse scientific backgrounds, which give the attendees a blend of both theory and results-oriented practical experience. The week-long training of each clinic will set attendees up for success with a mix of lecture and hands-on sessions.

2022 EDUCATIONAL CLINICS*

Practical X-ray Fluorescence

Spring 2022

www.icdd.com/xrf

Fundamentals of X-ray Powder Diffraction

Summer 2022

www.icdd.com/xrd

Advanced Methods in X-ray Powder Diffraction

Summer 2022

www.icdd.com/xrd

Rietveld Refinement & Indexing

Fall 2022

www.icdd.com/rietveld



* Dates, location, and format of clinics and conferences may be subject to change due to COVID-19.

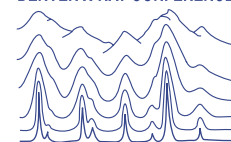
CONFERENCES*

www.icdd.com → Conferences

71st Denver X-ray Conference

www.dxcicdd.com

DENVER X-RAY CONFERENCE®



Bethesda North Marriott Hotel & Conference Centre
Rockville, Maryland, USA • 1- 5 August 2022

DXC is the world's largest annual conference dedicated to the fields of X-ray analysis. Experts in the fields of X-ray diffraction and X-ray fluorescence gather for a week of workshops, technical sessions, and manufacturer's exhibits. DXC attendees will have access to sessions on the latest advancements in XRD and XRF.

Pharmaceutical Powder X-ray Diffraction Symposium

www.icdd.com/ppxrd

XRD Training for the Pharmaceutical Scientist! ICDD sponsors this symposium designed to create a forum for the exchange of knowledge and cutting-edge ideas among those interested in the combined fields of XRD and pharmaceutical sciences. Visit the PPXRD website for news on the next symposium. Search and browse presentations from past PPXRD for free.

RESOURCES

www.icdd.com → Resources

Advances in X-ray Analysis

Register for free access to over 1,000 full publications from Advances in X-ray Analysis (AXA)- the proceedings of the Denver X-ray Conference (DXC). Access to AXA is provided by ICDD in cooperation with the authors and presenters of the DXC for the express purpose of educating the scientific community.

www.icdd.com/axa-allvolumes

Powder Diffraction Journal

ICDD's international journal, *Powder Diffraction*, focuses on materials characterization employing X-ray powder diffraction and related techniques. Cambridge University Press publishes it quarterly and with special topical issues. See freshly approved manuscripts online- since 2013, authors have utilized First View to speed approval of their manuscripts.

www.icdd.com/pdj

GRANT-IN-AID PROGRAM

www.icdd.com/grant-in-aid/

Join ICDD's elite group of scientists who contribute experimental powder diffraction patterns to the Powder Diffraction File. One of our main objectives is to expand the range of reference materials by producing and cataloging high-quality diffraction patterns in our internationally renowned database, the Powder Diffraction File.

ICDD Order/Quotation Form

Please complete entire form
Print or Type

Date _____

Please Check One:

☐ Order-Bill Me ☐ Please Send Quotation ☐ Please Send Proforma

End-User (where the database/software is installed and used; person responsible for license)

End-user Company _____

End-User: First Name _____ Last Name _____

Department _____

Street Address (No P.O. Boxes) _____

Address (Building/Room No.) _____

City _____ Postal Code _____ State/Province _____

Country _____

Phone _____ Mobile Phone _____

Email _____ Website _____

ICDD Customer Account No. (If known) _____

I currently use: ☐ PDF-2 ☐ PDF-4+ ☐ PDF-4/Organics ☐ PDF-4/Minerals ☐ PDF-4+/Web ☐ PDF-4/Axiom ☐ None

Release Year _____ Product Serial No _____

I currently use: ☐ JADE Standard ☐ JADE Pro ☐ None

Product Serial No _____

☐ Ship to address the same as End-User

Ship To (if different from End-User)

Organization _____

Ship To: First Name _____ Last Name _____

Department _____

Street Address (No P.O. Boxes) _____

Address (Building/Room No.) _____

City _____ Postal Code _____ State/Province _____

Country _____

Phone _____ Mobile Phone _____

Email _____ Website _____

Order Details

Items Ordered	Media Type	Quantity	Price (\$USD)
_____	<input type="radio"/> DVD <input type="radio"/> USB <input type="radio"/> Download	_____	_____
_____	<input type="radio"/> DVD <input type="radio"/> USB <input type="radio"/> Download	_____	_____
_____	<input type="radio"/> DVD <input type="radio"/> USB <input type="radio"/> Download	_____	_____
_____	<input type="radio"/> DVD <input type="radio"/> USB <input type="radio"/> Download	_____	_____
_____	<input type="radio"/> DVD <input type="radio"/> USB <input type="radio"/> Download	_____	_____
_____	<input type="radio"/> DVD <input type="radio"/> USB <input type="radio"/> Download	_____	_____

Company Classification

- ☐ Book Dealer
 ☐ Corporation
 ☐ Degree-Granting-Institution*
 ☐ Vendor
 ☐ Government
- ☐ Institute
 ☐ Other _____

*Academic Pricing Policy

An academic price is awarded to degree-granting (Assoc., B.S., M.S., Ph.D.) institutions and organizations that provide resources for student's course work that are affiliated with the degree-granting institution. Institutions may be required to submit documentation to verify eligibility. Please consult ICDD's price list for eligible products.

Billing Address (If different from End-User):

If paying with credit card, address must be the billing address.

First Name _____ Last Name _____

Organization _____

Address _____

Address (Building/Room No.) _____

City _____ Postal Code _____

State/Province _____ Country _____

Phone _____ Email _____

Terms are net 30 days, unless order is Proforma/Prepay. Finance charges of 1.5% per month may be applied to overdue balances. Shipping/handling charges will be added to your invoice. Duties and taxes are not included in the pricing and are the sole responsibility of the customer.

NOTE: All ICDD Order/Quotations are processed in a first-in/first-out basis. When your request has been received, it will be placed in our queue for processing. If we need additional information we will contact you. Thank you.

Credit Card Payment (Optional)

[Click here](#) to pay by credit card

ICDD Quote-Order Form: Please submit by emailing to sales@icdd.com or faxing to 610-325-9823



ICDD Pennsylvania:
 ICDD
 12 Campus Boulevard
 Newtown Square, PA 19073-3273, USA
 Tel: 610.325.9810 • Fax: 610.325.9823
 Toll Free: 866.378.9331 (US & Canada only)
info@icdd.com • www.icdd.com



ICDD California:
 ICDD
 DBA Materials Data
 2551 Second Street
 Livermore, CA 94550, USA
 Tel: 925.449.1084 • Fax: 925.373.1659
mdi@materialsdata.com • www.materialsdata.com

ICDD ORDER/QUOTE FORM - 08/03/21

ORDERING & SHIPPING

Contact Information

ICDD Pennsylvania Office

phone 1.610.325.9814
toll free (USA & Canada) 1.866.378.9331
fax 1.610.325.9823
email info@icdd.com
registration registration@icdd.com
sales sales@icdd.com
technical support support@icdd.com
web www.icdd.com
mail International Centre for Diffraction Data
12 Campus Boulevard
Newtown Square, PA 19073-3273 USA

ICDD California Office

phone 1.925.449.1084
fax 1.925.373.1659
email mdi@materialsdata.com
technical support support@materialsdata.com
web www.materialsdata.com
mail International Centre for Diffraction Data
DBA Materials Data
2551 Second Street
Livermore, CA 94550 USA

Easy Ways to Order

online icdd.mybigcommerce.com
email sales@icdd.com
fax 1.610.325.9823

Please send us a sales order via fax, email, or mail. ICDD requires the name of the end-user on all orders. Use product codes in your order, if possible. A convenient order/quote can be found on our website at www.icdd.com → Products → Purchase Products → Order/Quote Form.

The Powder Diffraction File databases are licensed, copyrighted databases. To purchase an ICDD database license, an end-user must purchase the license directly through the ICDD or place an order directly through one of our licensed distributors (www.icdd.com/distributors).

E-commerce

- Secure transmission using SSL encryption
- Customer online order history
- Online order tracking
- Email order confirmation
- Email shipping notification
- Customer satisfaction

Pricing and Products

The prices and products listed herein supersede all others previously published and are subject to change without notice. ICDD reserves the right to modify or discontinue any product at its discretion. Visit our website at www.icdd.com or contact our Customer Service Department for the most recent product information and pricing.

Return Policy

Products may be returned within 30 days from the invoice date for a full refund or credit (excluding shipping/handling). Products must be returned in original condition to qualify for a refund or credit. **Registered products cannot be returned.** Please complete a Return Merchandise Authorization (RMA) form to receive approval prior to returning product. Defective products will be replaced promptly but must be returned for testing.

Warranty Policy

Customers' sole remedy for any defective Licensed Product shall be replacement of the Licensed Product, which right must be exercised by written notice given within 30 days of purchase. Defective products will be replaced promptly but must be returned for testing.

Product warranty is on the preferred computer specifications associated with the product release. If you need to change your computer specifications, ICDD recommends that you reference the ReadMe.txt or product insert for your product release to check for compatibility.

Payment Terms

Wire transfers, credit cards (MasterCard, Visa, American Express), and checks in USD and drawn on USA banks are acceptable forms of payment. Letters of credit will not be accepted. Payment is due within 30 days from invoice date. Finance charges of 1.5% per month (annual percentage rate of 18%) may be applied to overdue balances.

Licensing

ICDD licenses the use of the Powder Diffraction File, associated software, and JADE software packages. Licensing for the Powder Diffraction File, associated software, and JADE software packages are provided via DVD, USB, USB dongle, or Download. ICDD's product licenses are nontransferable and intended for use on a single computer. Server licenses are available for use on multiple PCs. Please refer to the sales descriptions and product policies for further information on licensing.

*Contact ICDD for PDF-4+/Web licensing at info@icdd.com

Orders

Orders which include terms and conditions are reviewed prior to order acceptance. Once orders are accepted, they are processed on a first-in/first-out basis.

Note: Customers in Japan, South Korea, and Russia must order through an ICDD licensed vendor.

Shipment

The ICDD ships via INCOTERM: EXW / EXWORKS

Import duties and all taxes are not included in pricing and are the sole responsibility of the customer. Shipment will be made by a commercial carrier chosen by ICDD. For your convenience, shipping charges will be added to all invoices. Shipments can be insured upon request; additional charges will apply.

ICDD Licensed Distributors

www.icdd.com → Products → Purchase Products → Distributors or www.icdd.com/distributors

Return Merchandise Authorization (RMA)

www.icdd.com → Products → Purchase Products → Ordering Information → Return Policy → ICDD_RMA_form.pdf or www.icdd.com/assets/files/ICDD_RMA_form.pdf



International Centre for Diffraction Data
12 Campus Boulevard
Newtown Square, PA 19073-3273 USA



International Centre for Diffraction Data
DBA Materials Data
2551 Second Street
Livermore, CA 94550 USA